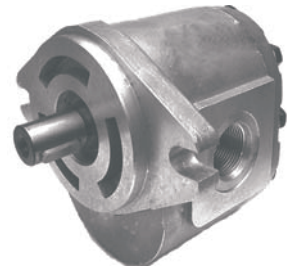


Hydraulic Gear Pump Model GP-F25

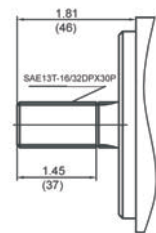
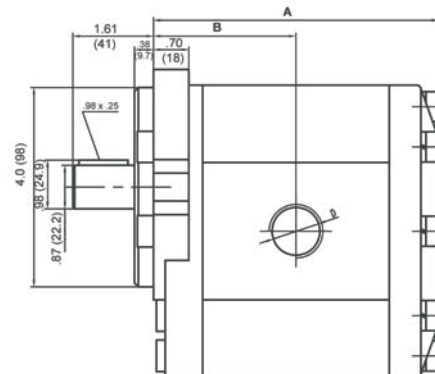
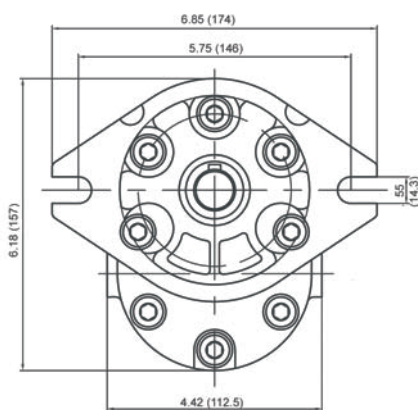
Technical Data

Model GP-F25 is a aluminium center section and cast iron end plate construction, high pressure Hydraulic Gear Pump with 6 displacement sizes from 1.22 to 3.84 cu. in/rev (20 to 63 ml/rev). The standard mounting flange is SAE-B (2 Bolt), 7/8 inch diameter parallel keyed drive shaft and SAE threaded ports.



Model	Displacment		Pressure		Speed RPM		Weight	
	cu.in/rev	cm3/rev	PSI	Mpa	Rated	Max	Lbs.	Kg
GP-F25-20	1.22	20	2900	3625	2000	3000	9.25	4.2
GP-F25-26	1.58	26	2900	3625	2000	3000	9.90	4.5
GP-F25-33	2.01	33	2900	3625	2000	3000	10.6	4.8
GP-F25-39	2.38	39	2900	3625	2000	3000	11.65	5.3
GP-F25-52	3.17	52	2900	3625	2000	3000	12.75	5.8
GP-F25-63	3.84	63	2900	3625	2000	3000	13.85	6.3

Installation Data



S13

Model	A		B	
	Millimeters	Inches	Millimeters	Inches
GP-F25-20	122	4.80	62.5	2.46
GP-F25-26	126	4.96	64.5	2.54
GP-F25-33	131	5.16	67	2.64
GP-F25-39	136	5.35	69.5	2.74
GP-F25-52	145	5.71	73	2.87
GP-F25-63	153	6.02	77.5	3.05

Port Sizes
Inlet - SAE-16 (1 5/16-12)

Ordering Information

GP - **F25** - **32** - **P** - **C**

Aluminium
Gear Pump

High
Pressure
Series

Displacement
cm3/rev
(see chart)
20/25/32
40/50/63

Drive
Shaft
P-7/8 Dia
Straight
S13-Spline

Rotation
Direction
C- Clockwise
A-Counter Clockwise
(viewed from drive shaft end)