

**Index**

**Subplates with Circuits**

D03 Subplate with P To T Relief - Nominal 3/8" .....	5.02.01
D03 Subplate with P To T Relief - Nominal 1/2" .....	5.02.02
D03 Subplate with P To T Relief - Nominal 3/4" .....	5.02.03
D05 Subplate with P To T Relief - Nominal 1/2" .....	5.03.01
D05H/HE Subplate with P To T Relief - Nominal 3/4" .....	5.03.02
D05H/HE Subplate with P To T Relief - Nominal 1" .....	5.03.03
D07 Subplate with P To T Relief - Nominal 3/4" .....	5.04.01
D07 Subplate with P To T Relief - Nominal 1" .....	5.04.02
D08 Subplate with P To T Relief - Nominal 1" .....	5.05.01
D08 Subplate with P To T Relief - Nominal 1 1/4" .....	5.05.02
Relief Valves .....	5.99.01

BAR MANIFOLDS
TAPPING PLATES
VALVE ADAPTERS
SUBPLATES
SUBPLATES w/ CIRCUITS
COVER PLATES
HEADERS/ JUNCTIONS
DIN BODIES
ACCESSORIES
VALVE PACKS & CUSTOMS
TECHNICAL INFO

## Product Tips and Features

BAR  
MANIFOLDSTAPPING  
PLATESVALVE  
ADAPTERS

SUBPLATES

SUBPLATES  
w/  
CIRCUITSCOVER  
PLATESHEADERS/  
JUNCTIONSDIN  
BODIES

ACCESSORIES

VALVE PACKS  
& CUSTOMSTECHNICAL  
INFO

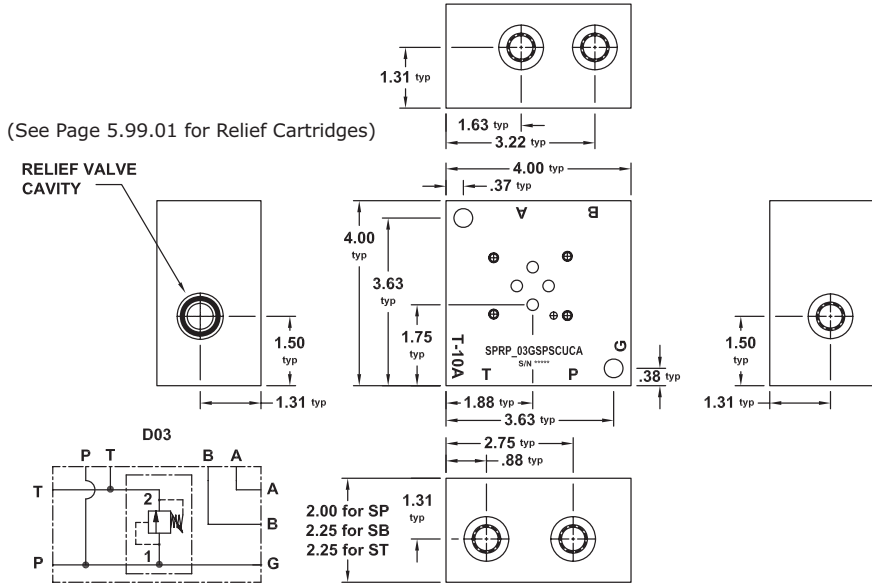
### Subplates with Circuits

Subplates with Relief from P to T are designed to provide a means to connect a single solenoid valve to field piping either on the power unit or near the actuator. This manifold provides an integral system relief cavity to minimize piping.

1. Standard materials are Aluminum and Ductile Iron. Other materials including Mild Steel or Stainless Steel are optionally available.
2. Special Finishes including Black Oxide, Electroless Nickel Plating or Anodizing are optionally available.
3. UNC or Metric mounting bolt kits and any plugs that may be required are supplied as standard.
4. Clearance holes are located outside the solenoid valve interface limits wherever possible in order to facilitate valve assembly prior to mounting the subplate.
5. Internal galleries have been maximized in order to minimize pressure drops and fluid velocities.
6. Port spacing has been maximized and aligned simplifying the installation of piping and minimizing space requirements.
7. No variation in design layout for each Model regardless of Port Code.
8. Gauge Ports on Pressure Port are standard in order to facilitate the setting of the relief valve.
9. All D05H and D05HE Subplates designed with dual tank ports on the solenoid interface in order to maximize valve performance.
10. "05T" Code provides dual tank ports without the pilot ports for D05H(E) designs for higher performance applications. See note on data sheets 5.03.02 and 5.03.03 for complete Part Number details.
11. "ST" Porting Style includes additional tank port on side in addition to bottom NPT tank port.
12. Subplates with Circuits such as "P" Port Check With and Without Reliefs, Reducer on "P" Port and Cross-Line reliefs on "A" and "B" Ports are available. Please contact Factory for Part Numbers.

# D03 Subplate with Relief - Nominal 3/8"

SPRP\_03GSPSCUCA



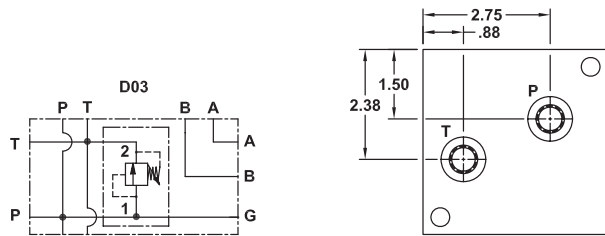
Mounting Kits include the following:

"SP" UNC Kit:  
2 - 3/8"-16 x 2.75" SHCS  
"SP" Metric Kit:  
2 - M10-1.5 x 70 mm SHCS

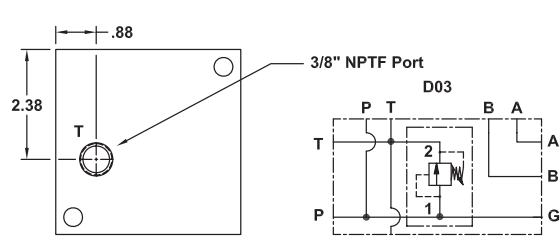
"SB" UNC Kit:  
2 - 3/8"-16 x 3.00" SHCS  
2 - plugs  
"SB" Metric Kit:  
2 - M10-1.5 x 75 mm SHCS  
2 - plugs

"ST" UNC Kit:  
2 - 3/8"-16 x 3.00" SHCS  
"ST" Metric Kit:  
2 - M10-1.5 x 75 mm SHCS

SPRP\_03GSBSCUCA - BOTTOM VIEW

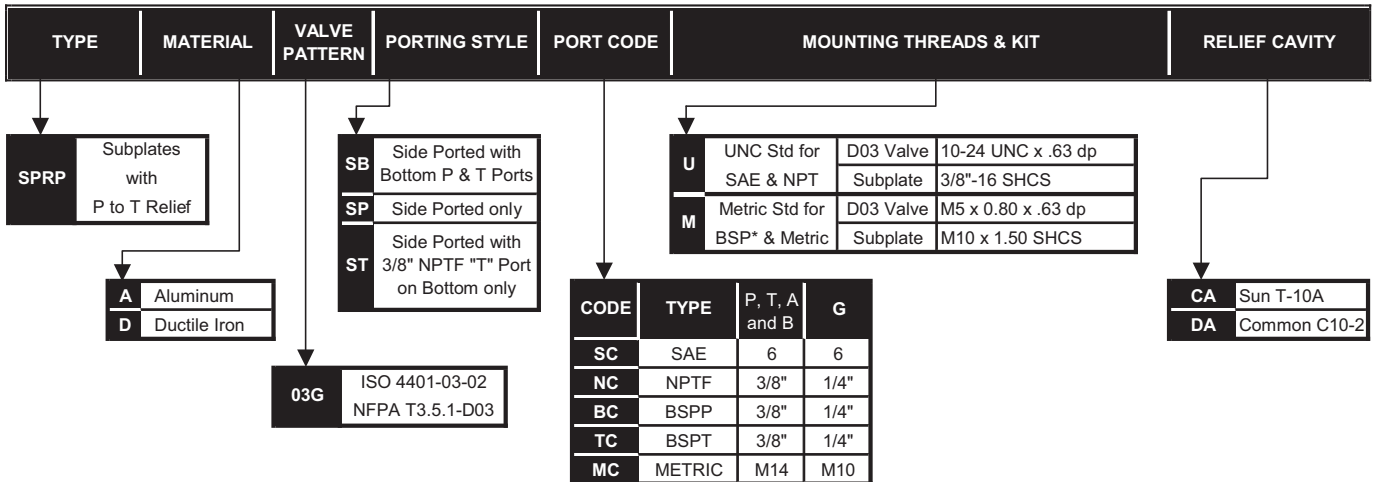


SPRP\_03GSTSCUCA - BOTTOM VIEW



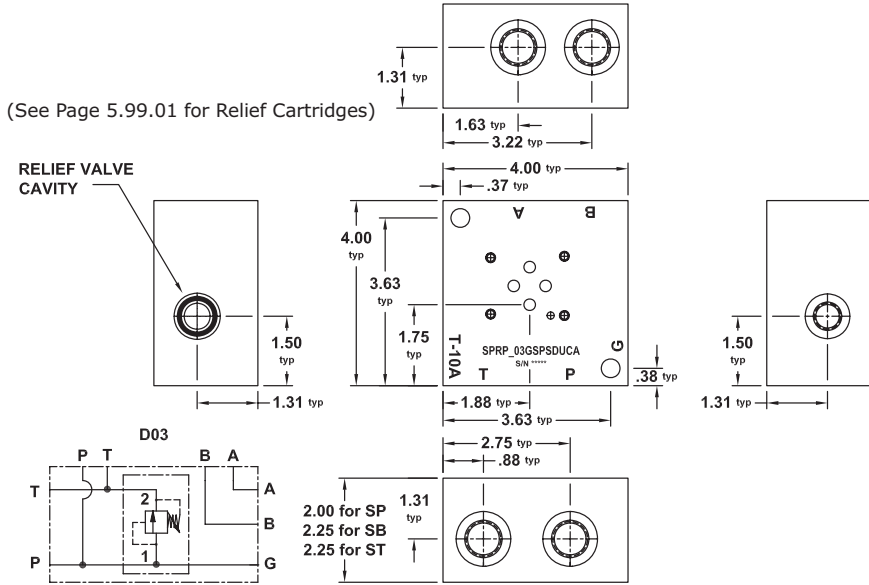
## PART NUMBER SYSTEM

Aluminum D03 Side Ported Subplate with SAE 6 Ports & T-10A Relief Example: **SPRPA03GSPSCUCA**



## D03 Subplate with Relief - Nominal 1/2"

SPRP\_03GSPSDUCA



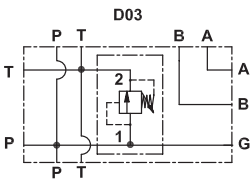
Mounting Kits include the following:

"SP" UNC Kit:  
2 - 3/8"-16 x 2.75" SHCS  
"SP" Metric Kit:  
2 - M10-1.5 x 70 mm SHCS

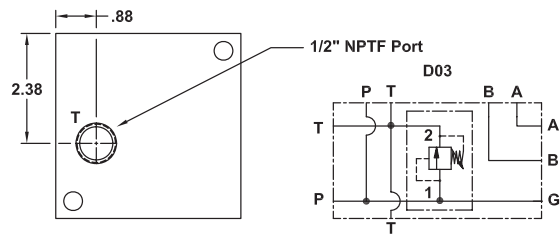
"SB" UNC Kit:  
2 - 3/8"-16 x 3.00" SHCS  
2 - plugs  
"SB" Metric Kit:  
2 - M10-1.5 x 75 mm SHCS  
2 - plugs

"ST" UNC Kit:  
2 - 3/8"-16 x 3.00" SHCS  
"ST" Metric Kit:  
2 - M10-1.5 x 75 mm SHCS

SPRP\_03GSBSDUCA - BOTTOM VIEW

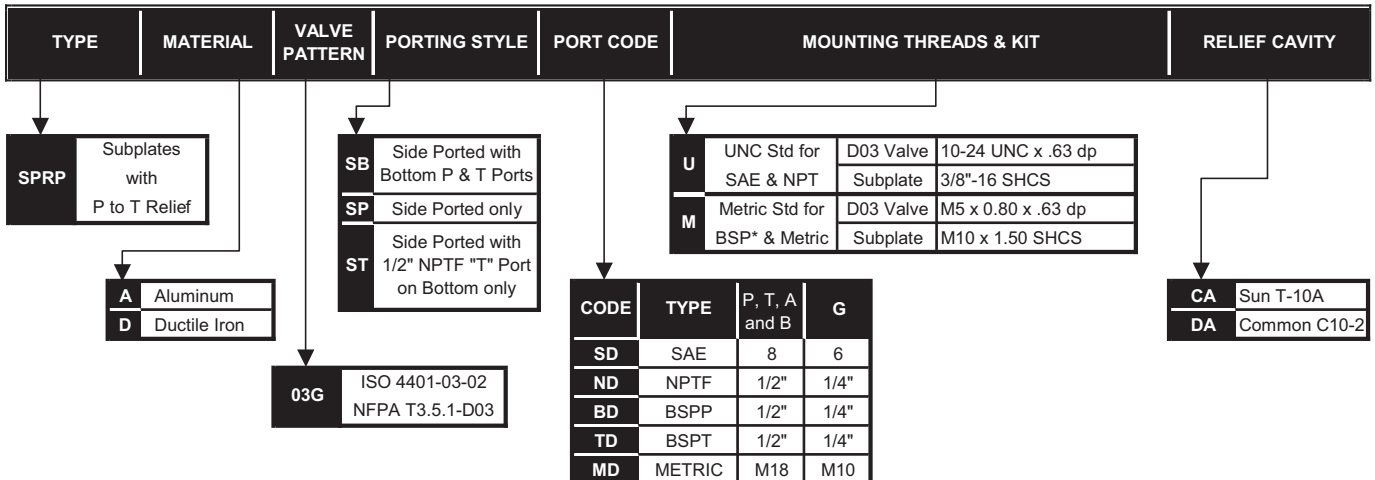


SPRP\_03GSTSDUCA - BOTTOM VIEW



### PART NUMBER SYSTEM

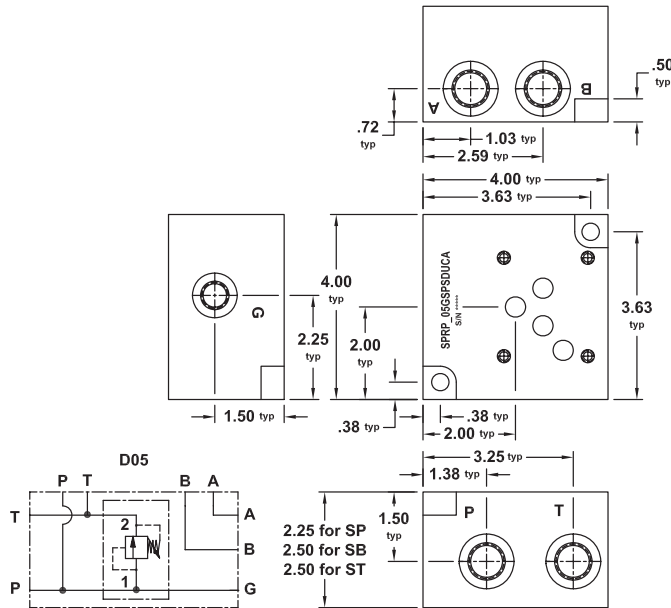
Aluminum D03 Side Ported Subplate with SAE 8 Ports & T-10A Relief Example: **SPRPA03GSPSDUCA**





## D05 Subplate with Relief - Nominal 1/2"

SPRP\_05GSPSDUCA



Mounting Kits include the following:

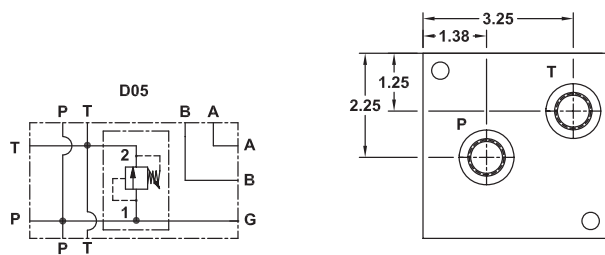
"SP" UNC Kit:  
2 - 3/8"-16 x 2.50" SHCS  
"SP" Metric Kit:  
2 - M10-1.5 x 65 mm SHCS

"SB" UNC Kit:  
2 - 3/8"-16 x 2.75" SHCS  
2 - plugs  
"SB" Metric Kit:  
2 - M10-1.5 x 70 mm SHCS  
2 - plugs

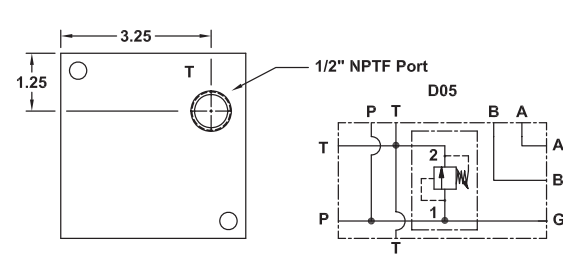
"ST" UNC Kit:  
2 - 3/8"-16 x 2.75" SHCS  
"ST" Metric Kit:  
2 - M10-1.5 x 70 mm SHCS

(See Page 5.99.01 for Relief Cartridges)  
RELIEF VALVE CAVITY

SPRP\_05GSBSDUCA - BOTTOM VIEW



SPRP\_05GSTSDUCA - BOTTOM VIEW



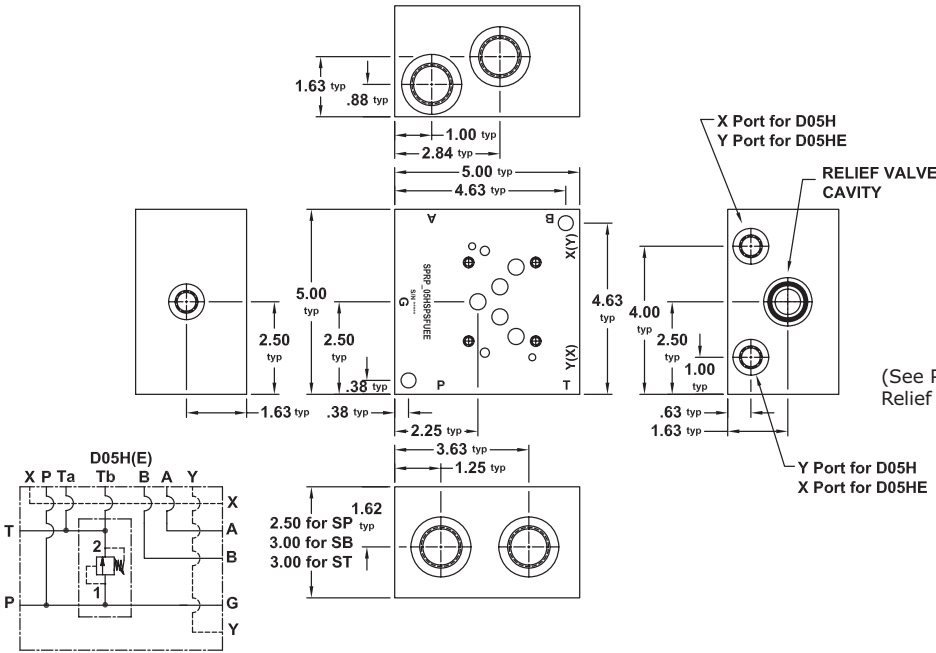
### PART NUMBER SYSTEM

Aluminum D05 Side Ported Subplate with SAE 8 Ports & T-10A Relief Example: **SPRPA05GSPSDUCA**

TYPE	MATERIAL	VALVE PATTERN	PORTING STYLE	PORT CODE	MOUNTING THREADS & KIT	RELIEF CAVITY																								
<b>SPRP</b>	Subplates with P to T Relief		<b>SB</b> Side Ported with Bottom P & T Ports <b>SP</b> Side Ported only <b>ST</b> Side Ported with 1/2" NPTF "T" Port on Bottom only	<b>U</b> UNC Std for SAE & NPT <b>M</b> Metric Std for BSP* & Metric	<table border="1"> <tr> <td>D05 Valve</td> <td>1/4"-20 UNC x .75 dp</td> </tr> <tr> <td>Subplate</td> <td>3/8"-16 UNC SHCS</td> </tr> <tr> <td>D05 Valve</td> <td>M6 x 1.00 x .75 dp</td> </tr> <tr> <td>Subplate</td> <td>M10 x 1.50 SHCS</td> </tr> </table>	D05 Valve	1/4"-20 UNC x .75 dp	Subplate	3/8"-16 UNC SHCS	D05 Valve	M6 x 1.00 x .75 dp	Subplate	M10 x 1.50 SHCS	<b>CA</b> Sun T-10A <b>DA</b> Common C10-2																
	D05 Valve	1/4"-20 UNC x .75 dp																												
Subplate	3/8"-16 UNC SHCS																													
D05 Valve	M6 x 1.00 x .75 dp																													
Subplate	M10 x 1.50 SHCS																													
<b>A</b> Aluminum <b>D</b> Ductile Iron	<b>05G</b> ISO 4401-05-04 NFPA T3.5.1-D05																													
				<table border="1"> <thead> <tr> <th>CODE</th> <th>TYPE</th> <th>P, T, A and B</th> <th>G</th> </tr> </thead> <tbody> <tr> <td>SD</td> <td>SAE</td> <td>8</td> <td>6</td> </tr> <tr> <td>ND</td> <td>NPTF</td> <td>1/2"</td> <td>1/4"</td> </tr> <tr> <td>BD</td> <td>BSPP</td> <td>1/2"</td> <td>1/4"</td> </tr> <tr> <td>TD</td> <td>BSPT</td> <td>1/2"</td> <td>1/4"</td> </tr> <tr> <td>MD</td> <td>METRIC</td> <td>M18</td> <td>M10</td> </tr> </tbody> </table>	CODE	TYPE	P, T, A and B	G	SD	SAE	8	6	ND	NPTF	1/2"	1/4"	BD	BSPP	1/2"	1/4"	TD	BSPT	1/2"	1/4"	MD	METRIC	M18	M10		
CODE	TYPE	P, T, A and B	G																											
SD	SAE	8	6																											
ND	NPTF	1/2"	1/4"																											
BD	BSPP	1/2"	1/4"																											
TD	BSPT	1/2"	1/4"																											
MD	METRIC	M18	M10																											

## D05H(E) High Flow Subplate w/Relief - Nominal 3/4"

SPRP\_05\_SPSFUEE



Mounting Kits include the following:

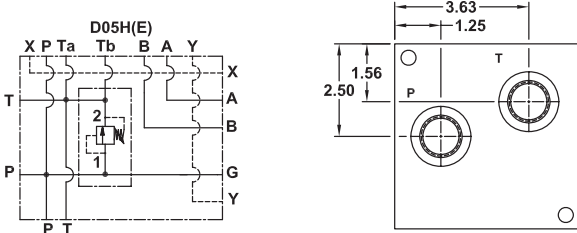
"SP" UNC Kit:  
2 - 3/8"-16 x 3.00" SHCS  
"SP" Metric Kit:  
2 - M10-1.5 x 75 mm SHCS

"SB" UNC Kit:  
2 - 3/8"-16 x 3.50" SHCS  
2 - plugs  
"SB" Metric Kit:  
2 - M10-1.5 x 90 mm SHCS  
2 - plugs

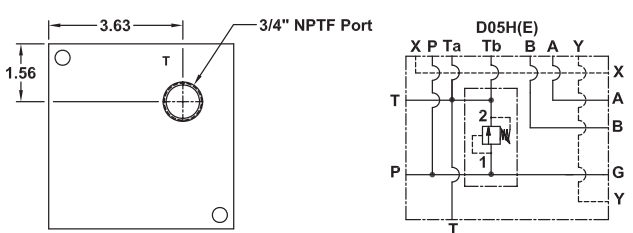
"ST" UNC Kit:  
2 - 3/8"-16 x 3.50" SHCS  
"ST" Metric Kit:  
2 - M10-1.5 x 90 mm SHCS

(See Page 5.99.01 for Relief Cartridges)

SPRP\_05\_SBSFUEE - BOTTOM VIEW



SPRP\_05\_STSFUEE - BOTTOM VIEW



### PART NUMBER SYSTEM

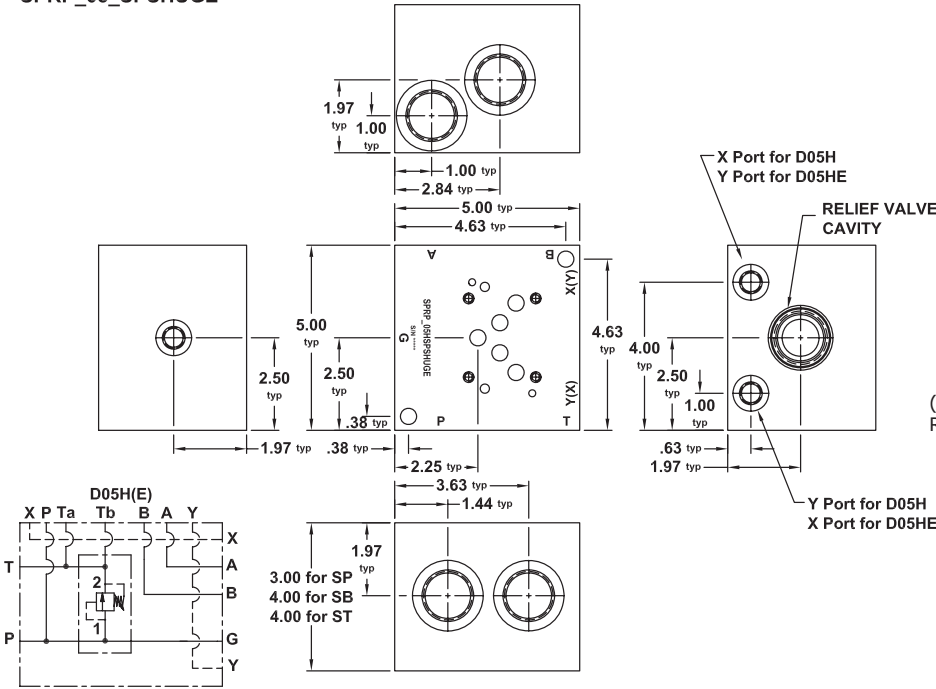
Aluminum D05H Side Ported Subplate with SAE 12 Ports & T-3A Relief Example: SPRPA05HSPSFUEE

TYPE	MATERIAL	VALVE PATTERN	PORTING STYLE	PORT CODE	MOUNTING THREADS & KIT	RELIEF CAVITY AND PILOT PORT OPTIONS
SPRP	Subplates with P to T Relief					
	A Aluminum					
	D Ductile Iron					
SB	Side Ported with Bottom P & T Ports					
	SP	Side Ported only				
	ST	Side Ported with 3/4" NPTF "T" Port on Bottom only				
05H	(USA Standard) NFPA T3.5.1-D05 Alt B					
05E	ISO 4401-05-05 (EURO) NFPA T3.5.1-D05 Alt A					
U	UNC Std for SAE & NPT	D05 Valve	1/4"-20 UNC x 0.75" dp			
M	Metric Std for BSP* & Metric	D05 Valve	M6 x 1.00 x .75" dp			
		Subplate	3/8"-16 SHCS			
		Subplate	M10 x 1.50 SHCS			
DE	Common C10-2					
EE	Sun T-3A					
SF	SAE	12	6	6		
NF	NPTF	3/4"	1/4"	1/4"		
BF	BSPP	3/4"	1/4"	1/4"		
TF	BSPT	3/4"	1/4"	1/4"		
MF	METRIC	M27	M10	M10		

**NOTE:** As a Non-Standard Option, Subplates with no Pilot Ports can be ordered by using "05T" for Valve Pattern Code and replacing the "E" at the end of the Part Number with an "A". An Example Part Number would be: SPRPA05TSPSFUEA

## D05H(E) High Flow Subplate w/Relief - Nominal 1"

SPRP\_05\_SPSHUGE



Mounting Kits include the following:

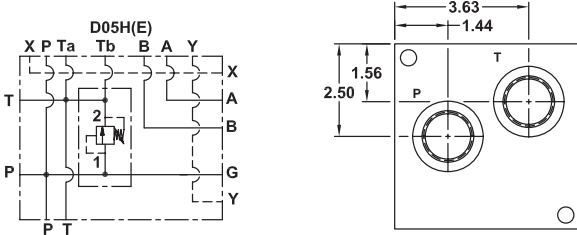
"SP" UNC Kit:  
2 - 3/8"-16 x 3.50" SHCS  
"SP" Metric Kit:  
2 - M10-1.5 x 90 mm SHCS

"SB" UNC Kit:  
2 - 3/8"-16 x 4.50" SHCS  
2 - plugs  
"SB" Metric Kit:  
2 - M10-1.5 x 120 mm SHCS  
2 - plugs

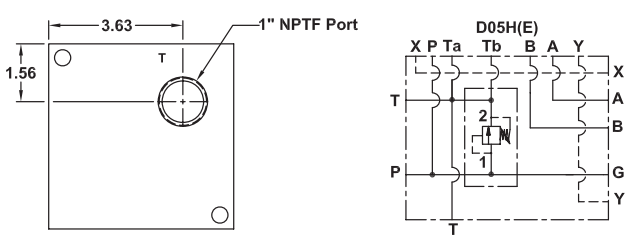
"ST" UNC Kit:  
2 - 3/8"-16 x 4.50" SHCS  
"ST" Metric Kit:  
2 - M10-1.5 x 120 mm SHCS

(See Page 5.99.01 for Relief Cartridges)

SPRP\_05\_SBSHUGE - BOTTOM VIEW



SPRP\_05\_STSHUGE - BOTTOM VIEW



### PART NUMBER SYSTEM

Aluminum D05H Side Ported Subplate with SAE 16 Ports & T-16A Relief Example: **SPRPA05HSPSHUGE**

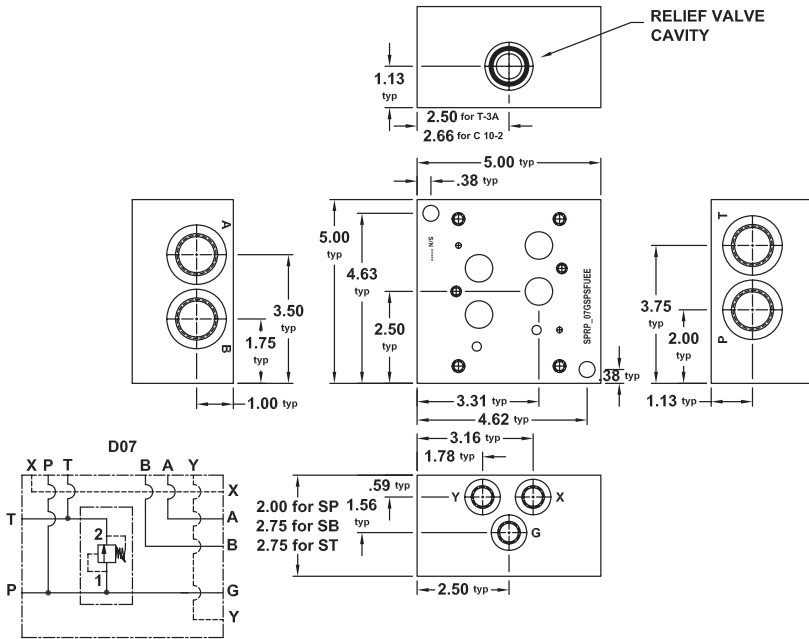
TYPE	MATERIAL	VALVE PATTERN	PORTING STYLE	PORT CODE	MOUNTING THREADS & KIT	RELIEF CAVITY AND PILOT PORT OPTIONS
SPRP	Subplates with P to T Relief					
	A Aluminum					
	D Ductile Iron					
05H	Side Ported with Bottom P & T Ports					
	Side Ported only					
	Side Ported with 1" NPTF "T" Port on Bottom only					
05E	(USA Standard) NFPA T3.5.1-D05 Alt B					
	ISO 4401-05-05 (EURO) NFPA T3.5.1-D05 Alt A					
SH	SAE	16	6	6	U UNC Std for D05 Valve 1/4"-20 UNC x 0.75" dp	
	NPTF	1"	1/4"	1/4"	Subplate 3/8"-16 SHCS	
BH	BSP	1"	1/4"	1/4"	M Metric Std for D05 Valve M6 x 1.00 x .75" dp	
	BSPT	1"	1/4"	1/4"	Subplate M10 x 1.50 SHCS	
MH	METRIC	M33	M10	M10	GE Sun T-16A	
						HE Common C16-2

NOTE: As a Non-Standard Option, Subplates with no Pilot Ports can be ordered by using "05T" for Valve Pattern Code and replacing the "E" at the end of the Part Number with an "A". An Example Part Number would be: **SPRPA05TSPSHUGA**

**D07 Subplate with Relief - Nominal 3/4"**

SPRP\_07GSPSFUEE

(See Page 5.99.01 for Relief Cartridges)



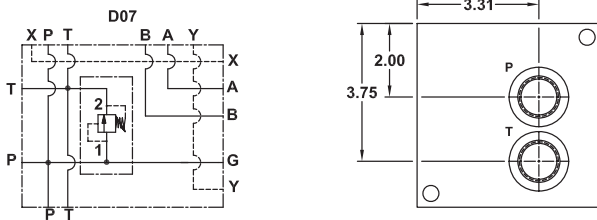
Mounting Kits include the following:

"SP" UNC Kit:  
2 - 3/8"-16 x 2.75" SHCS  
"SP" Metric Kit:  
2 - M10-1.5 x 70 mm SHCS

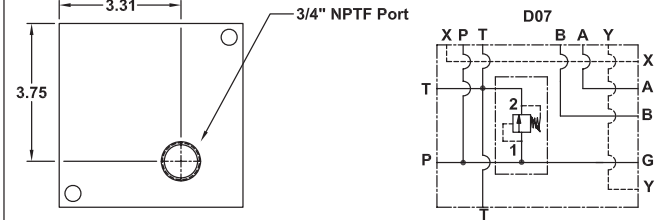
"SB" UNC Kit:  
2 - 3/8"-16 x 3.50" SHCS  
2 - plugs  
"SB" Metric Kit:  
2 - M10-1.5 x 90 mm SHCS  
2 - plugs

"ST" UNC Kit:  
2 - 3/8"-16 x 3.50" SHCS  
"ST" Metric Kit:  
2 - M10-1.5 x 90 mm SHCS

SPRP\_07GSBSFUEE - BOTTOM VIEW



SPRP\_07GSTSFUEE - BOTTOM VIEW

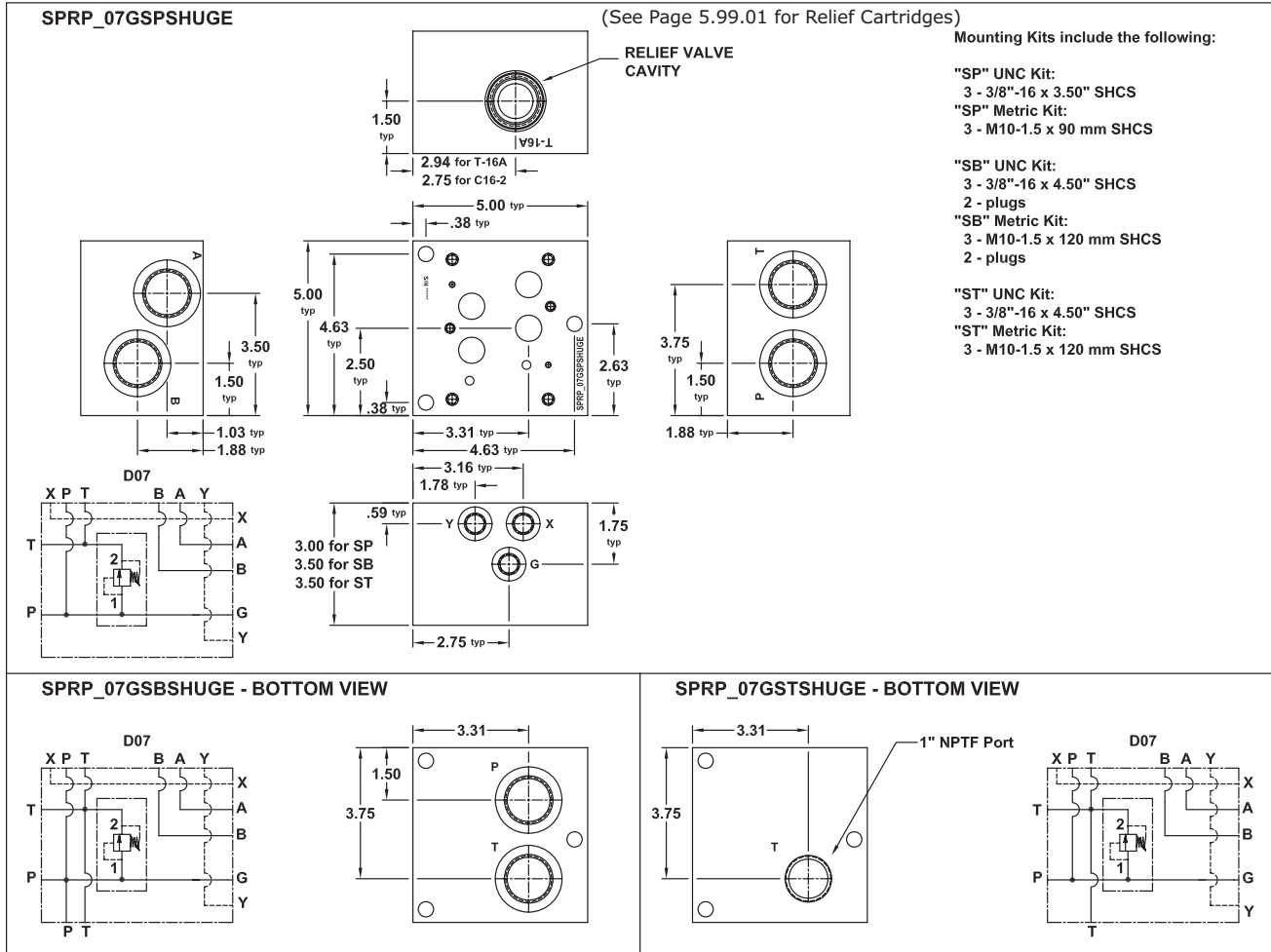


**PART NUMBER SYSTEM**

Aluminum D07 Side Ported Subplate with SAE 12 Ports & T-3A Relief Example: **SPRPA07GSPSFUEE**

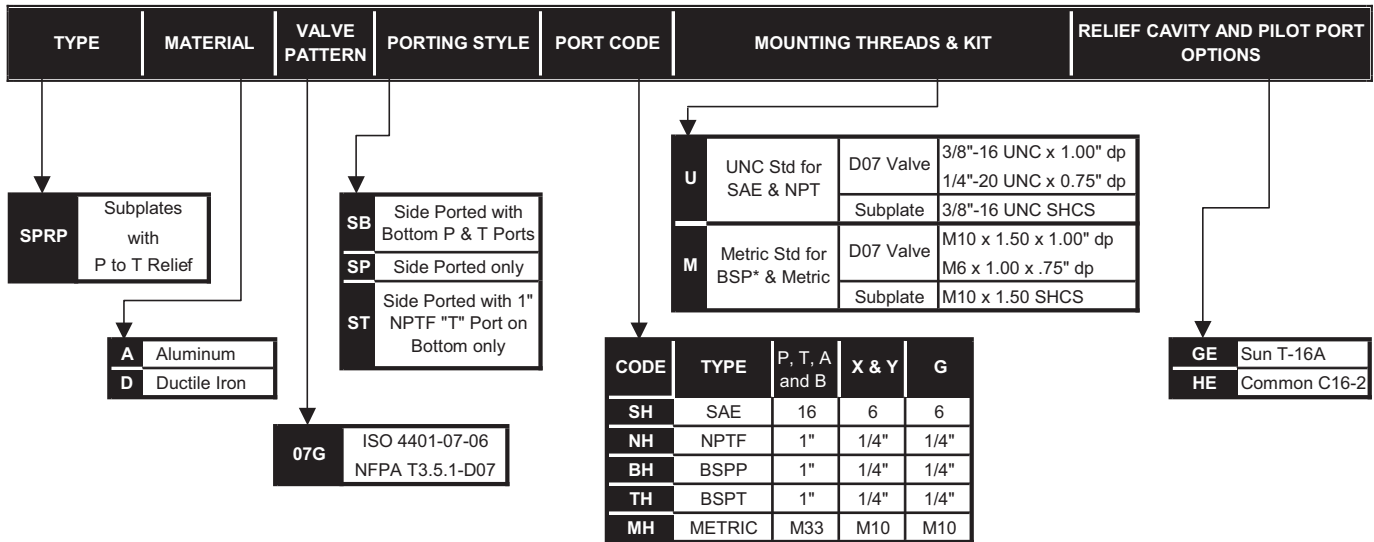
TYPE	MATERIAL	VALVE PATTERN	PORTING STYLE	PORT CODE	MOUNTING THREADS & KIT	RELIEF CAVITY AND PILOT PORT OPTIONS																														
SPRP	Subplates with P to T Relief	SB Side Ported with Bottom P & T Ports SP Side Ported only ST Side Ported with 3/4" NPTF "T" Port on Bottom only	07G ISO 4401-07-06 NFPA T3.5.1-D07		<table border="1"> <tr> <td rowspan="2">U</td> <td>UNC Std for SAE &amp; NPT</td> <td>D07 Valve</td> <td>3/8"-16 UNC x 1.00" dp</td> </tr> <tr> <td></td> <td>Subplate</td> <td>1/4"-20 UNC x 0.75" dp</td> </tr> <tr> <td rowspan="2">M</td> <td>Metric Std for BSP* &amp; Metric</td> <td>D07 Valve</td> <td>M10 x 1.50 x 1.00" dp</td> </tr> <tr> <td></td> <td>Subplate</td> <td>M6 x 1.00 x .75" dp</td> </tr> </table>	U	UNC Std for SAE & NPT	D07 Valve	3/8"-16 UNC x 1.00" dp		Subplate	1/4"-20 UNC x 0.75" dp	M	Metric Std for BSP* & Metric	D07 Valve	M10 x 1.50 x 1.00" dp		Subplate	M6 x 1.00 x .75" dp	<table border="1"> <tr> <td>DE</td> <td>Common C10-2</td> </tr> <tr> <td>EE</td> <td>Sun T-3A</td> </tr> </table>	DE	Common C10-2	EE	Sun T-3A												
							U	UNC Std for SAE & NPT	D07 Valve	3/8"-16 UNC x 1.00" dp																										
	Subplate	1/4"-20 UNC x 0.75" dp																																		
M	Metric Std for BSP* & Metric	D07 Valve	M10 x 1.50 x 1.00" dp																																	
		Subplate	M6 x 1.00 x .75" dp																																	
DE	Common C10-2																																			
EE	Sun T-3A																																			
A	Aluminum																																			
D	Ductile Iron																																			
					<table border="1"> <thead> <tr> <th>CODE</th> <th>TYPE</th> <th>P, T, A and B</th> <th>X &amp; Y</th> <th>G</th> </tr> </thead> <tbody> <tr> <td>SF</td> <td>SAE</td> <td>12</td> <td>6</td> <td>6</td> </tr> <tr> <td>NF</td> <td>NPTF</td> <td>3/4"</td> <td>1/4"</td> <td>1/4"</td> </tr> <tr> <td>BF</td> <td>BSP</td> <td>3/4"</td> <td>1/4"</td> <td>1/4"</td> </tr> <tr> <td>TF</td> <td>BSPT</td> <td>3/4"</td> <td>1/4"</td> <td>1/4"</td> </tr> <tr> <td>MF</td> <td>METRIC</td> <td>M27</td> <td>M10</td> <td>M10</td> </tr> </tbody> </table>	CODE	TYPE	P, T, A and B	X & Y	G	SF	SAE	12	6	6	NF	NPTF	3/4"	1/4"	1/4"	BF	BSP	3/4"	1/4"	1/4"	TF	BSPT	3/4"	1/4"	1/4"	MF	METRIC	M27	M10	M10	
CODE	TYPE	P, T, A and B	X & Y	G																																
SF	SAE	12	6	6																																
NF	NPTF	3/4"	1/4"	1/4"																																
BF	BSP	3/4"	1/4"	1/4"																																
TF	BSPT	3/4"	1/4"	1/4"																																
MF	METRIC	M27	M10	M10																																

## D07 Subplate With Relief - Nominal 1"



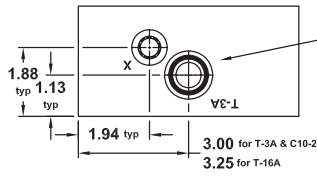
### PART NUMBER SYSTEM

Aluminum D07 Side Ported Subplate with SAE 16 Ports & T-16A Relief Example: **SPRPA07GSPSHUGE**



# D08 Subplate with Relief - Nominal 1"

SPRP\_08GSPSHUEE



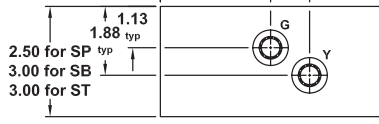
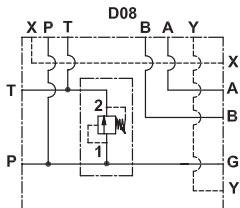
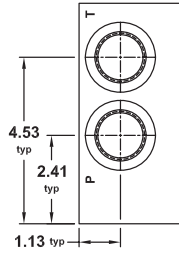
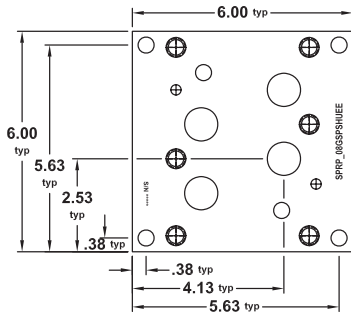
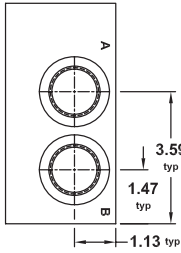
RELIEF VALVE CAVITY  
(See Page 5.99.01 for Relief Cartridges)

Mounting Kits include the following:

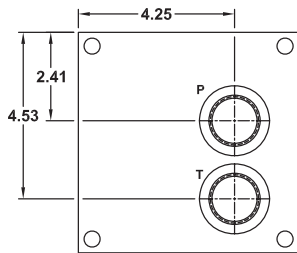
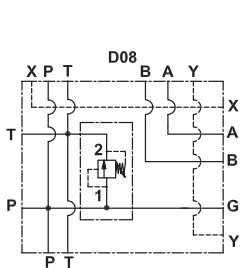
"SP" UNC Kit:  
4 - 3/8"-16 x 3.25" SHCS  
"SP" Metric Kit:  
4- M10-1.5 x 80 mm SHCS

"SB" UNC Kit:  
4 - 3/8"-16 x 3.75" SHCS  
2 - plugs  
"SB" Metric Kit:  
4- M10-1.5 x 90 mm SHCS  
2 - plugs

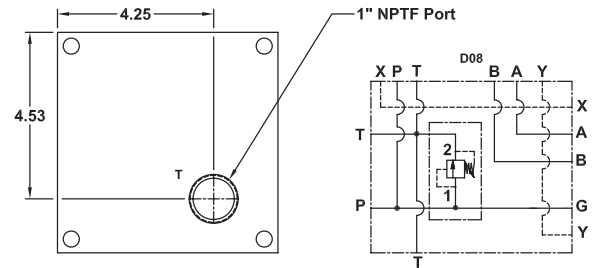
"ST" UNC Kit:  
4 - 3/8"-16 x 3.75" SHCS  
"ST" Metric Kit:  
4- M10-1.5 x 90 mm SHCS



SPRP\_08GSBSHUEE - BOTTOM VIEW



SPRP\_08GSTSHUEE - BOTTOM VIEW

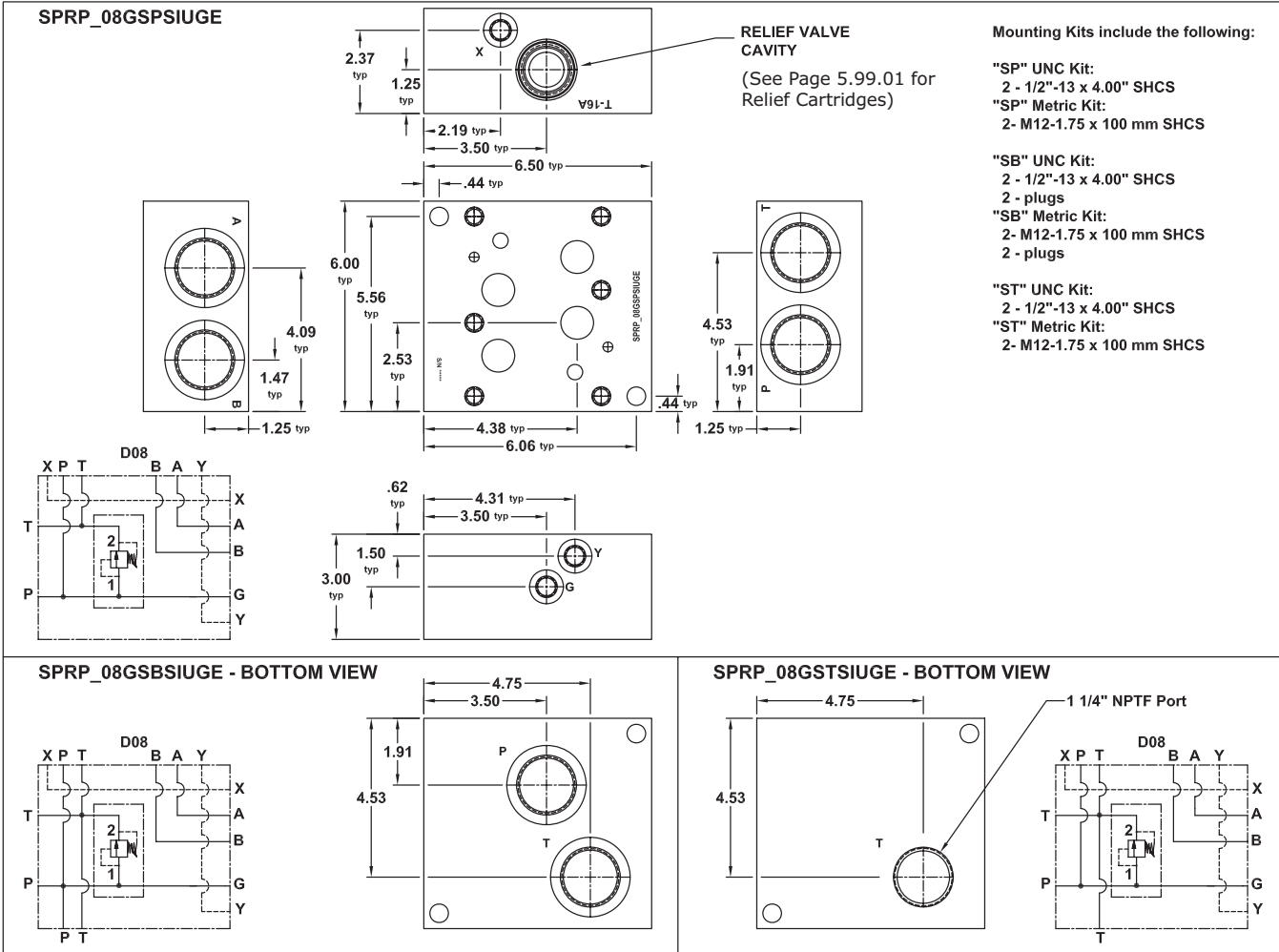


## PART NUMBER SYSTEM

Aluminum D08 Side Ported Subplate with SAE 16 Ports & T-3A Relief Example: **SPRPA08GSPSHUEE**

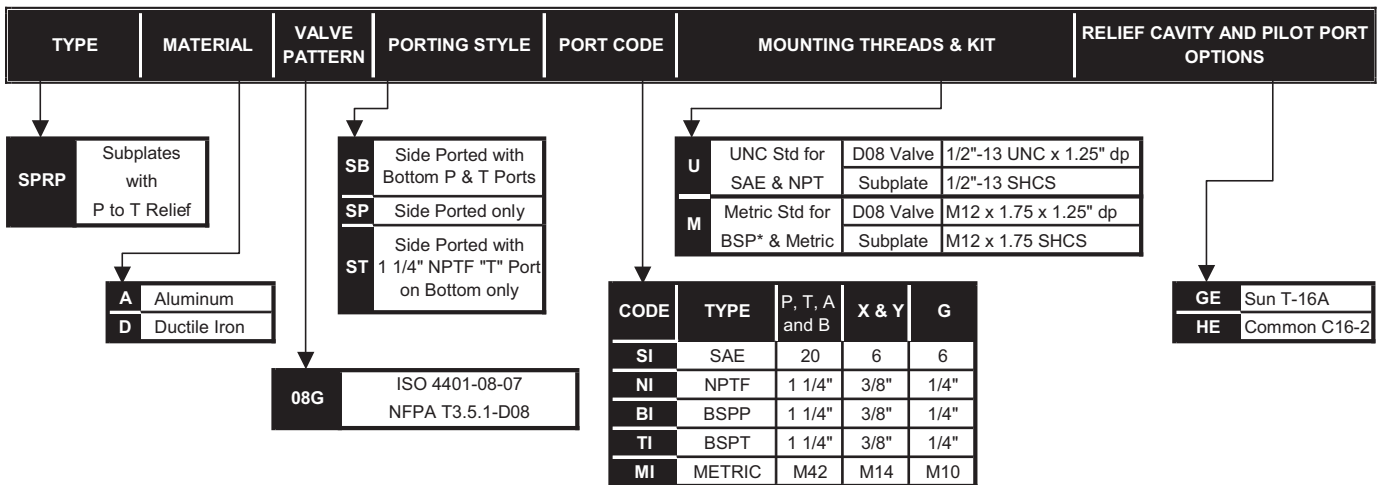
TYPE	MATERIAL	VALVE PATTERN	PORTING STYLE	PORT CODE	MOUNTING THREADS & KIT	RELIEF CAVITY AND PILOT PORT OPTIONS																																																			
SPRP	Subplates with P to T Relief																																																								
	A Aluminum D Ductile Iron	SB Side Ported with Bottom P & T Ports SP Side Ported only ST Side Ported with 1" NPTF "T" Port on Bottom only	ISO 4401-08-07 NFPA T3.5.1-D08	<table border="1"> <thead> <tr> <th>CODE</th> <th>TYPE</th> <th>P, T, A and B</th> <th>X &amp; Y</th> <th>G</th> </tr> </thead> <tbody> <tr> <td>SH</td> <td>SAE</td> <td>16</td> <td>6</td> <td>6</td> </tr> <tr> <td>NH</td> <td>NPTF</td> <td>1"</td> <td>3/8"</td> <td>1/4"</td> </tr> <tr> <td>BH</td> <td>BSPP</td> <td>1"</td> <td>3/8"</td> <td>1/4"</td> </tr> <tr> <td>TH</td> <td>BSPT</td> <td>1"</td> <td>3/8"</td> <td>1/4"</td> </tr> <tr> <td>MH</td> <td>METRIC</td> <td>M33</td> <td>M14</td> <td>M10</td> </tr> </tbody> </table>	CODE	TYPE	P, T, A and B	X & Y	G	SH	SAE	16	6	6	NH	NPTF	1"	3/8"	1/4"	BH	BSPP	1"	3/8"	1/4"	TH	BSPT	1"	3/8"	1/4"	MH	METRIC	M33	M14	M10	<table border="1"> <thead> <tr> <th>U</th> <th>Metric Std for BSP* &amp; Metric</th> <th>D08 Valve</th> <th>1/2"-13 UNC x 1.25" dp</th> </tr> </thead> <tbody> <tr> <td>U <th>UNC Std for SAE &amp; NPT</th> <th>D08 Valve</th> <th>1/2"-13 UNC x 1.25" dp</th> </td></tr> <tr> <td></td> <td></td> <th>Subplate</th> <th>3/8"-16 SHCS</th> </tr> <tr> <td></td> <td></td> <th>Subplate</th> <th>M10 x 1.50 SHCS</th> </tr> </tbody> </table>	U	Metric Std for BSP* & Metric	D08 Valve	1/2"-13 UNC x 1.25" dp	U <th>UNC Std for SAE &amp; NPT</th> <th>D08 Valve</th> <th>1/2"-13 UNC x 1.25" dp</th>	UNC Std for SAE & NPT	D08 Valve	1/2"-13 UNC x 1.25" dp			Subplate	3/8"-16 SHCS			Subplate	M10 x 1.50 SHCS	<table border="1"> <tbody> <tr> <td>DE</td> <td>Common C10-2</td> </tr> <tr> <td>EE</td> <td>Sun T-3A</td> </tr> <tr> <td>GE</td> <td>Sun T-16A</td> </tr> </tbody> </table>	DE	Common C10-2	EE	Sun T-3A	GE
CODE	TYPE				P, T, A and B	X & Y	G																																																		
SH	SAE	16	6	6																																																					
NH	NPTF	1"	3/8"	1/4"																																																					
BH	BSPP	1"	3/8"	1/4"																																																					
TH	BSPT	1"	3/8"	1/4"																																																					
MH	METRIC	M33	M14	M10																																																					
U	Metric Std for BSP* & Metric	D08 Valve	1/2"-13 UNC x 1.25" dp																																																						
U <th>UNC Std for SAE &amp; NPT</th> <th>D08 Valve</th> <th>1/2"-13 UNC x 1.25" dp</th>	UNC Std for SAE & NPT	D08 Valve	1/2"-13 UNC x 1.25" dp																																																						
		Subplate	3/8"-16 SHCS																																																						
		Subplate	M10 x 1.50 SHCS																																																						
DE	Common C10-2																																																								
EE	Sun T-3A																																																								
GE	Sun T-16A																																																								
				08G																																																					

## D08 Subplate with Relief - Nominal 1-1/4"



### PART NUMBER SYSTEM

Aluminum D08 Side Ported Subplate with SAE 20 Ports & T-16A Relief Example: **SPRPA08GSPSIUGE**



## Relief Valves

BAR  
MANIFOLDS

TAPPING  
PLATES

VALVE  
ADAPTERS

SUBPLATES

SUBPLATES  
w/ CIRCUITS

COVER  
PLATES

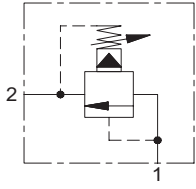
HEADERS/  
JUNCTIONS

DIN  
BODIES

VALVE PACKS  
ACCESSORIES  
& CUSTOMS

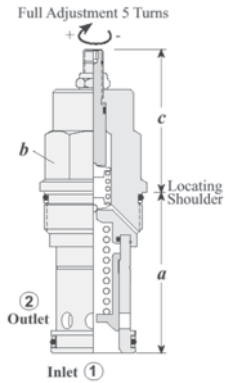
TECHNICAL  
INFO

### Pilot Operated

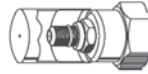



Capacity	Typical Cartridge Model Code	Cavity	Cartridge Dimensions					Installation Torque (lb.ft.)
			a	b	c		K	
12 GPM	RPCC - LAN	T - 162 A	1.22	3/4"	2.11	2.17	2.31	25 to 30
25 GPM	RPEC - LAN	T - 10A	1.56	7/8"	2.00	2.06	2.25	30 to 35
50 GPM	RPGC - LAN	T - 3A	1.88	1 1/8"	2.12	2.18	2.38	45 to 50
100 GPM	RPIC - LAN	T - 16A	2.44	1 1/4"	2.44	2.47	2.69	150 to 160
200 GPM	RPKC - LAN	T - 18A	3.13	1 5/8"	2.81	2.94	3.06	350 to 375

### ORDERING INFORMATION

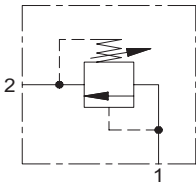


**R P \* C - \* \* \***

<b>Nominal Capacity</b>	<b>Control</b>	<b>Adjustment Range</b>	<b>Seal</b>
<b>C</b> 12 GPM*	<b>L</b> Standard Screw (as shown)	<b>A</b> 100 - 3000 psi	<b>N</b> Buna -N
<b>E</b> 25 GPM	<b>C</b> Tamper Resistant	<b>B</b> 50 - 1500 psi	<b>V</b> Viton
<b>G</b> 50 GPM		<b>C</b> 150 - 6000 psi	
<b>I</b> 100 GPM	<b>K</b> Handknob	<b>N</b> 60 - 800 psi	
<b>K</b> 200 GPM		<b>Q</b> 60 - 400 psi	
		<b>W</b> 150 - 4500 psi	

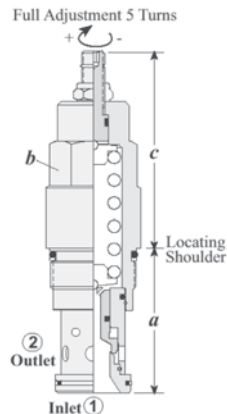
*Adjustment Range Options:*  
 A, B, C and W are standard set at 1000 psi  
 N Option is standard set at 400 psi  
 Q Option is standard set at 200 psi  
 \* Minimum setting 75 psi on all ranges  
 Customer may specify pressure setting

### Direct Acting

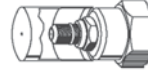


Capacity	Typical Cartridge Model Code	Cavity	Cartridge Dimensions				Installation Torque (lb.ft.)
			a	b	c		
12 GPM	RDBA - LAN	T - 162 A	1.22	3/4"	2.11	2.17	25 to 30
25 GPM	RDDA - LAN	T - 10A	1.56	7/8"	2.38	2.44	30 to 35
50 GPM	RDFA - LAN	T - 3A	1.88	1 1/8"	2.50	2.56	45 to 50
100 GPM	RDHA - LAN	T - 16A	2.44	1 1/4"	3.25	3.31	150 to 160
200 GPM	RDJA - LAN	T - 18A	3.13	1 5/8"	3.94	4.07	350 to 375

### ORDERING INFORMATION



**R D \* A - \* \* \***

<b>Nominal Capacity</b>	<b>Control</b>	<b>Adjustment Range</b>	<b>Seal</b>
<b>B</b> 12 GPM	<b>L</b> Standard Screw (as shown)	<b>A</b> 500 - 3000 psi	<b>N</b> Buna -N
<b>D</b> 25 GPM	<b>C</b> Tamper Resistant	<b>B</b> 300 - 1500 psi	<b>V</b> Viton
<b>F</b> 50 GPM		<b>C</b> 1000 - 6000 psi	
<b>H</b> 100 GPM		<b>D</b> 200 - 800 psi	
<b>J</b> 200 GPM		<b>E</b> 100 - 400 psi	
		<b>S</b> 50 - 200 psi	
		<b>W</b> 1000 - 4500 psi	

*Adjustment Range Options:*  
 A, B, C and W are standard set at 1000 psi  
 D Option is standard set at 400 psi  
 E Option is standard set at 200 psi  
 S Option is standard set at 100 psi  
 Customer may specify pressure setting

U.S. Patent # 4,742,846  
 European Patent Pending

