

**Index**

**Subplates without Circuits**

D03 Subplate - Nominal 1/4" & 3/8" .....	4.02.01
D03 Subplate - Nominal 1/2" .....	4.02.02
D03 Subplate - Nominal 3/4" .....	4.02.03
D05 Subplate - Nominal 1/2" .....	4.03.01
D05 Subplate - Nominal 3/4" .....	4.03.02
D05H/HE Subplate - Nominal 3/4" .....	4.03.03
D05H/HE Subplate - Nominal 1" .....	4.03.04
D07 Subplate - Nominal 3/4" .....	4.04.01
D07 Subplate - Nominal 1" .....	4.04.02
D08 Subplate - Nominal 1" .....	4.05.01
D08 Subplate - Nominal 1 1/4" .....	4.05.02
SPXX	
Servo Interfaces. ISO 10372 & proprietary .....	Consult Factory
S04	
S06	
57S	
44S	
PRV & Relief Interfaces ISO6264, ISO5781 & NFPA .....	Consult Factory
08R	
08P	
10P	
15R	
06F	
Oversized Interface Ports .....	Consult Factory

- BAR MANIFOLDS
- TAPPING PLATES
- VALVE ADAPTERS
- SUBPLATES
- SUBPLATES w/ CIRCUITS
- COVER PLATES
- HEADERS/ JUNCTIONS
- DIN BODIES
- ACCESSORIES
- VALVE PACKS & CUSTOMS
- TECHNICAL INFO

## Product Tips and Features

BAR  
MANIFOLDSTAPPING  
PLATESVALVE  
ADAPTERS

SUBPLATES

SUBPLATES  
w/  
CIRCUITSCOVER  
PLATESHEADERS/  
JUNCTIONSDIN  
BODIES

ACCESSORIES

VALVE PACKS  
& CUSTOMSTECHNICAL  
INFO

### Subplates without Circuits

Subplates are designed to provide a means to connect a single solenoid valve to field piping either on the power unit or near the actuator.

1. Standard materials are Aluminum and Ductile Iron. Other materials including Mild Steel or Stainless Steel are optionally available.
2. Special Finishes including Black Oxide, Electroless Nickel Plating or Anodizing are optionally available.
3. UNC or Metric mounting bolt kits and any plugs that may be required are supplied as standard.
4. Clearance holes are located outside the solenoid valve interface limits wherever possible in order to facilitate valve assembly prior to mounting the subplate.
5. Internal galleries have been maximized in order to minimize pressure drops and fluid velocities.
6. Port spacing has been maximized and aligned simplifying the installation of piping and minimizing space requirements.
7. No variation in design layout for each Model regardless of Port Code.
8. All D05H and D05HE Subplates designed with dual tank ports on the solenoid interface in order to maximize valve performance.
9. "05T" Code provides dual tank ports without the pilot ports for D05H(E) designs for higher performance applications. See note on pages 4.03.03 and 4.03.04 for complete Part Number details.
10. "ST" Porting Style includes additional tank port on side in addition to bottom NPT tank port.
11. Servo Subplates are available. Please contact Factory for Part Numbers.
12. Subplates for Gasket Mount Reliefs, Pressure Reducers, Flow Controls, etc. are available. Please contact Factory for Part Numbers.

**D03 Subplate - Nominal 1/4" & 3/8"**

BAR  
MANIFOLDS

TAPPING  
PLATES

VALVE  
ADAPTERS

SUBPLATES

SUBPLATES  
w/ CIRCUITS

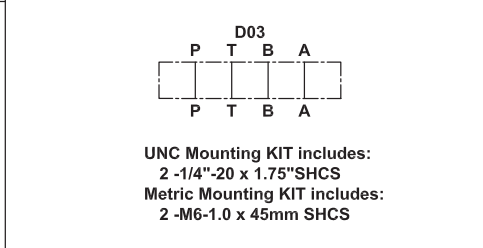
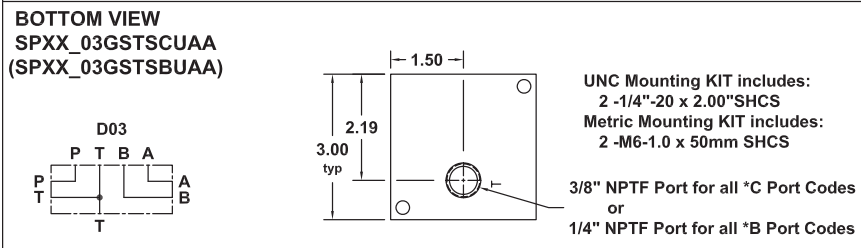
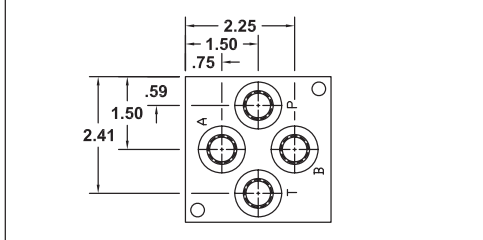
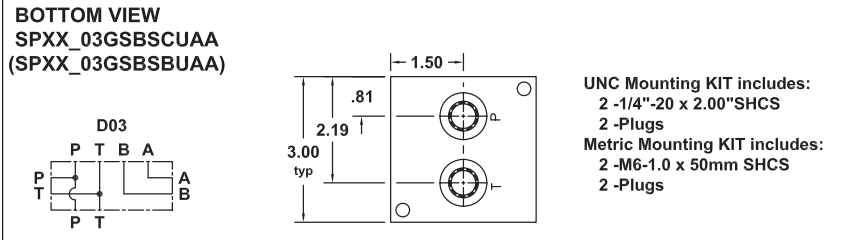
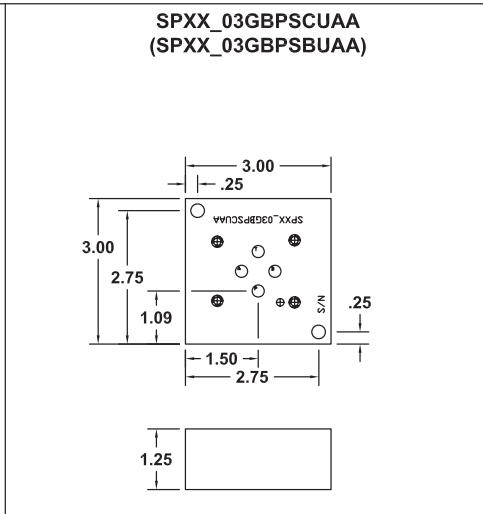
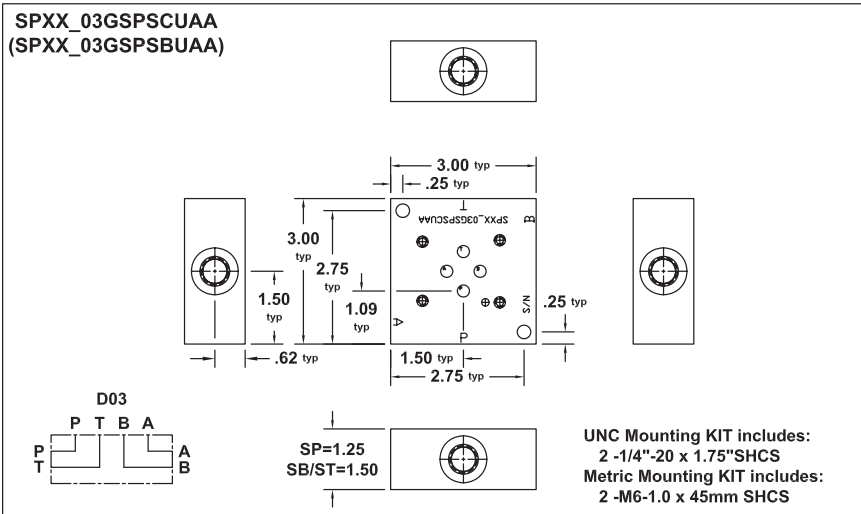
COVER  
PLATES

HEADERS/  
JUNCTIONS

DIN  
BODIES

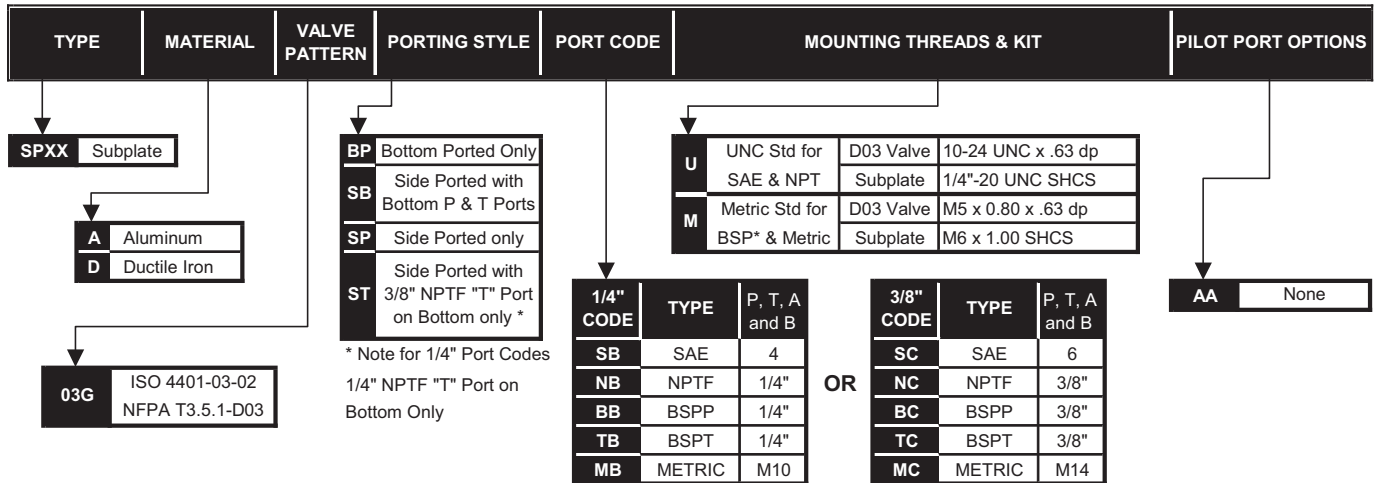
VALVE PACKS  
ACCESSORIES  
& CUSTOMS

TECHNICAL  
INFO

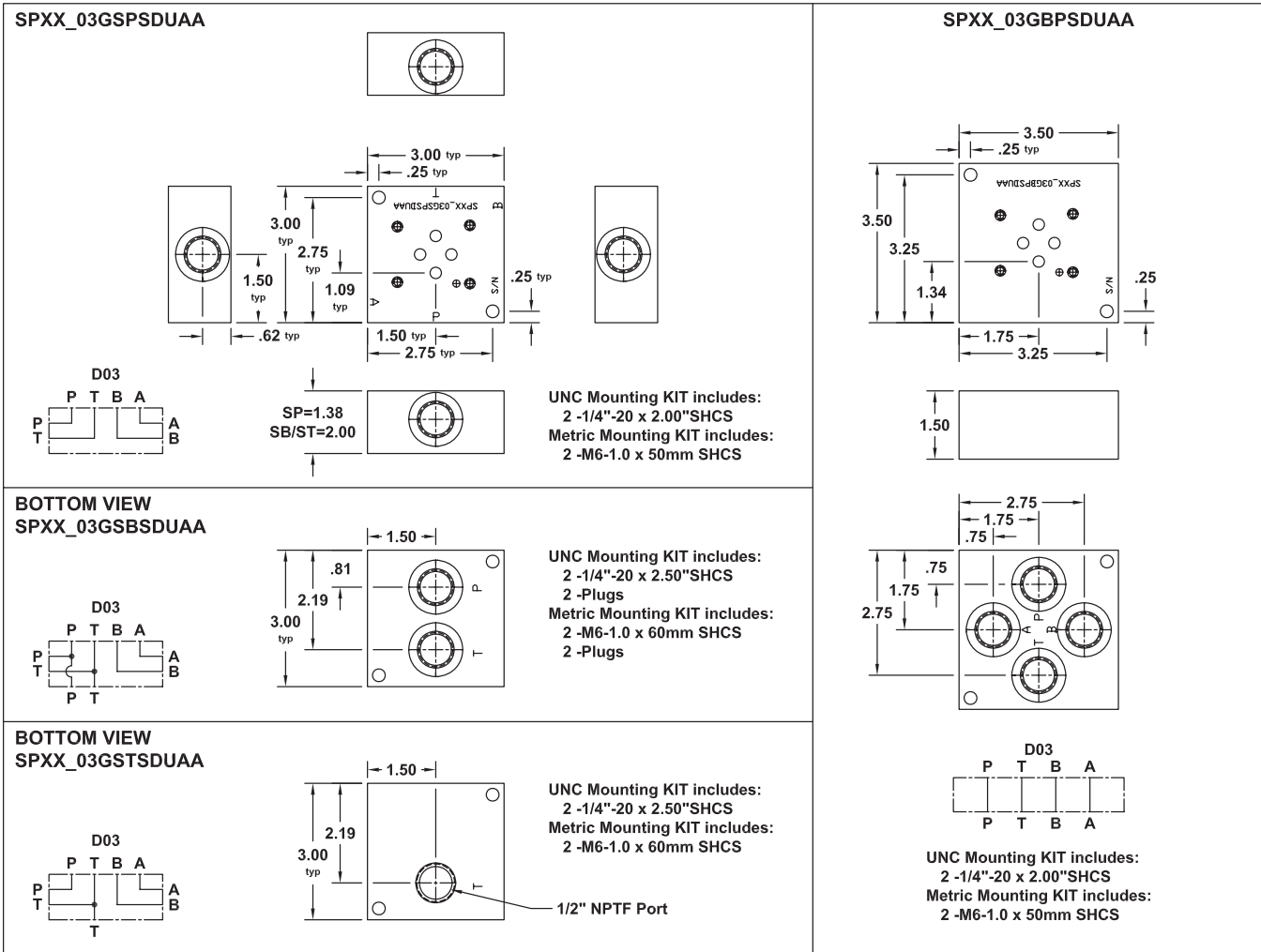


**PART NUMBER SYSTEM**

Aluminum D03 Side Ported Subplate with SAE 6 Ports Example: **SPXXA03GSPSCUAA**

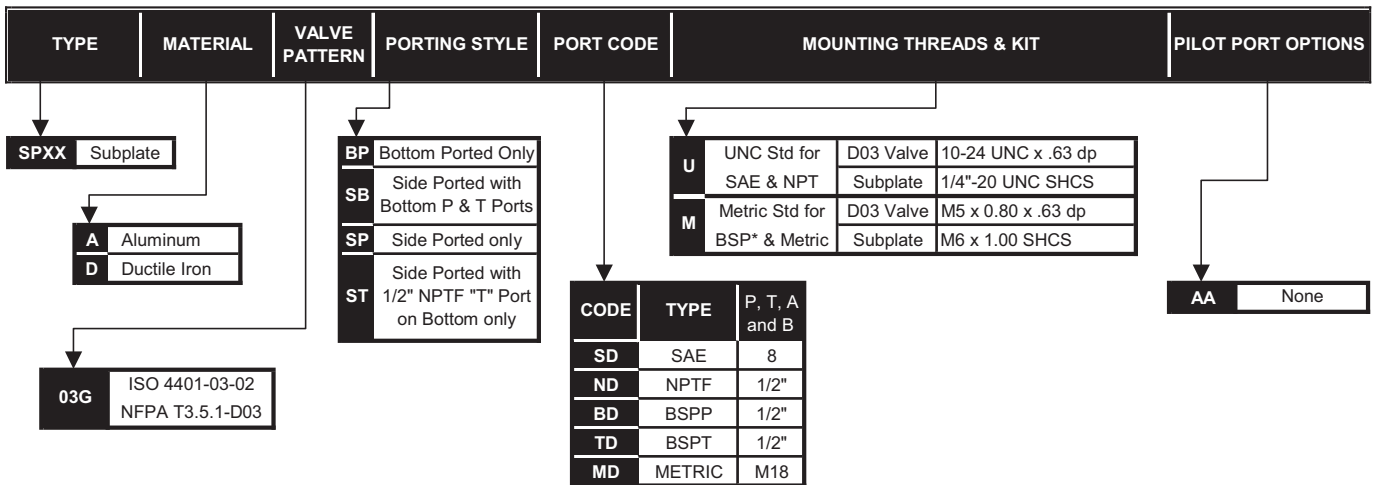


## D03 Subplate - Nominal 1/2"



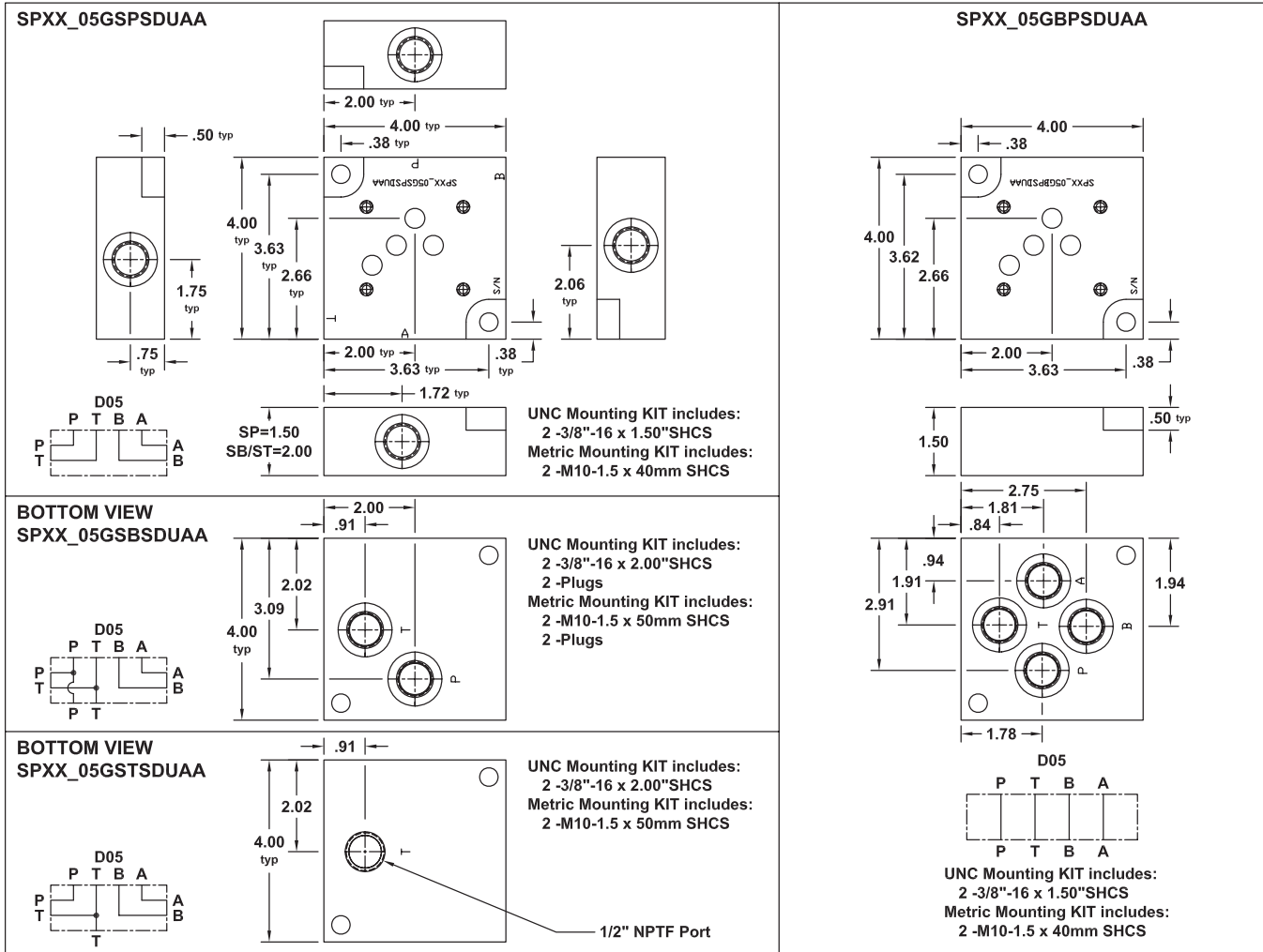
### PART NUMBER SYSTEM

Aluminum D03 Side Ported Subplate with SAE 8 Ports Example: **SPXXA03GSPSDUAA**



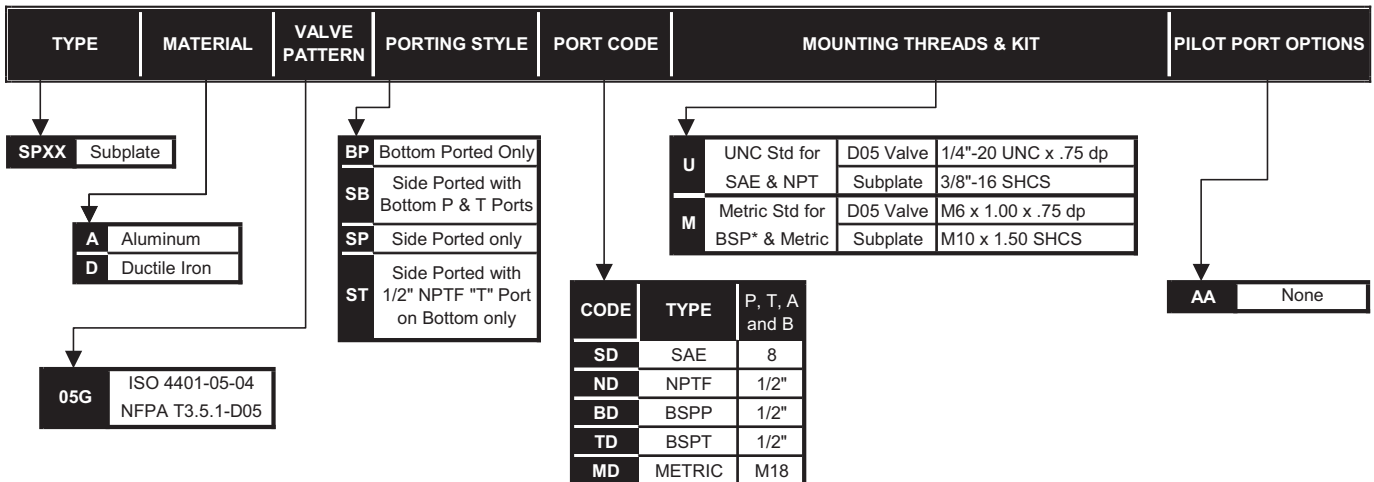


## D05 Subplate - Nominal 1/2"



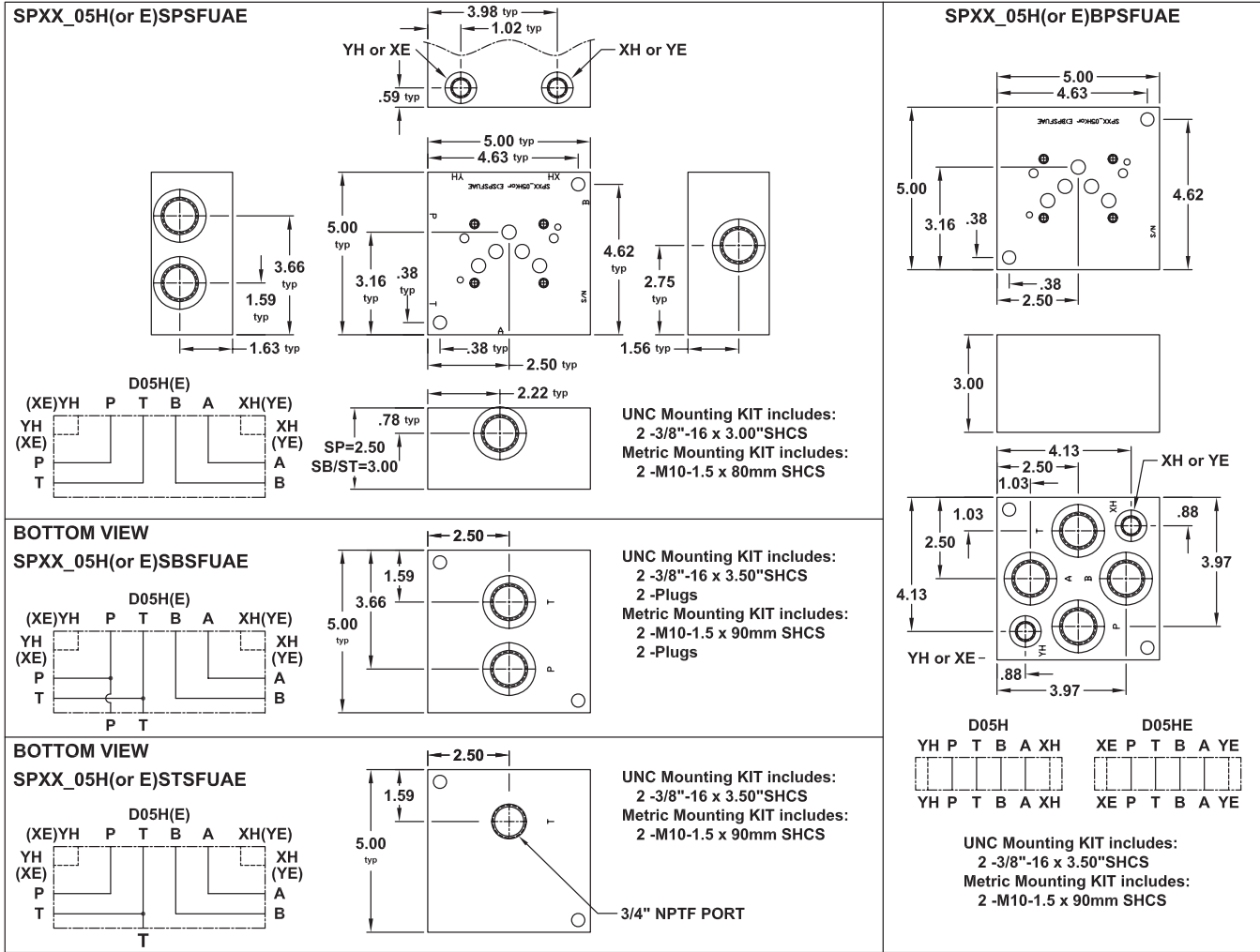
### PART NUMBER SYSTEM

Aluminum D05 Side Ported Subplate with SAE 8 Ports Example: **SPXXA05GSPSDUAA**



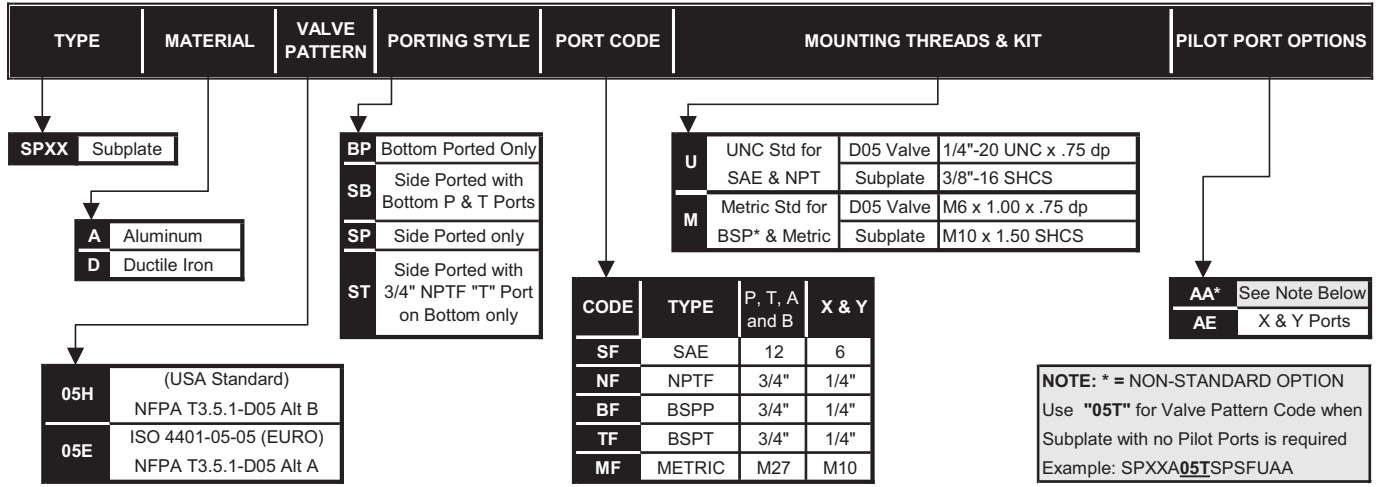


## D05H(E) Subplate - Nominal 3/4"



### PART NUMBER SYSTEM

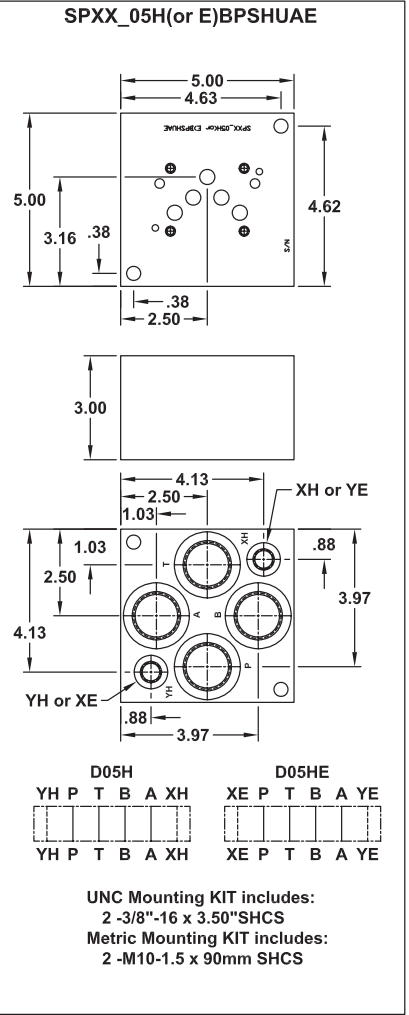
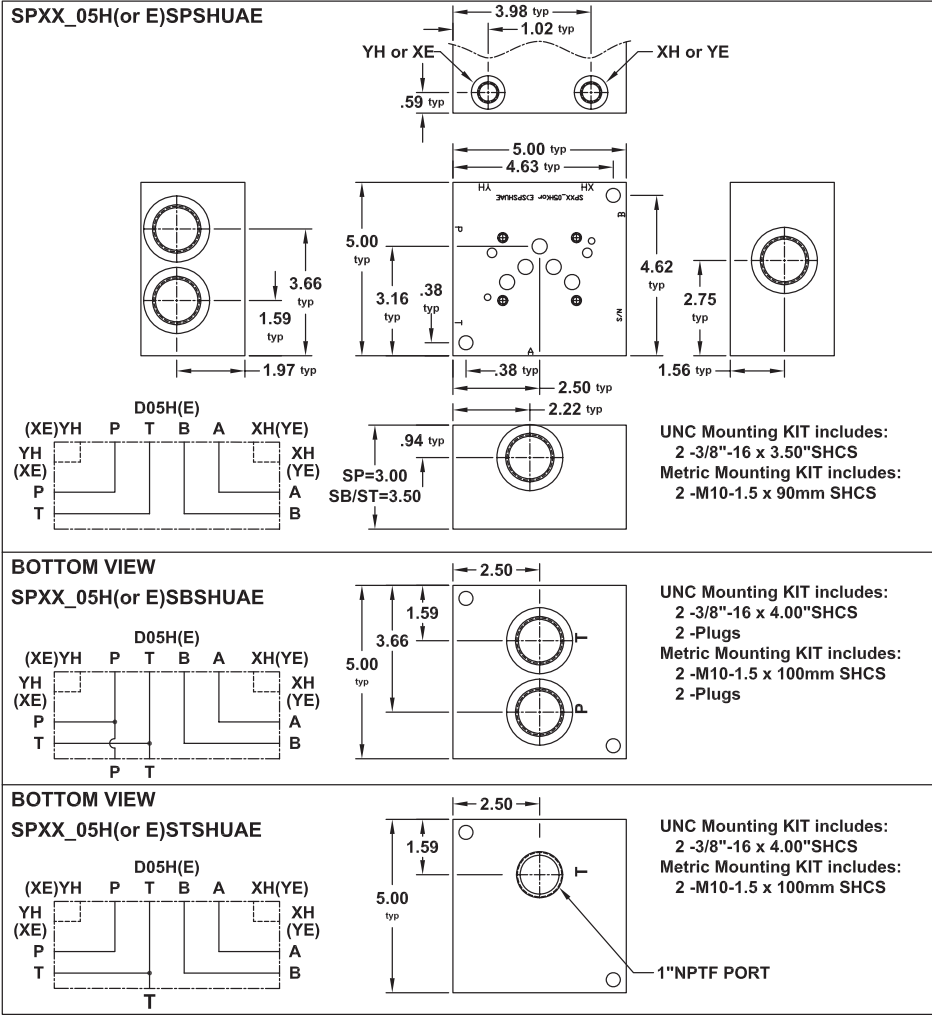
Aluminum D05H Side Ported Subplate with SAE 12 Ports & Pilot Ports Example: **SPXXA05HSPSFUAE**



BAR MANIFOLDS  
TAPPING PLATES  
VALVE ADAPTERS  
SUBPLATES  
SUBPLATES w/ CIRCUITS  
COVER PLATES  
HEADERS/JUNCTIONS  
DIN BODIES  
ACCESSORIES & CUSTOMS  
VALVE PACKS  
TECHNICAL INFO

## D05H(E) Subplate - Nominal 1"

BAR  
MANIFOLDS  
TAPPING  
PLATES  
VALVE  
ADAPTERS  
SUBPLATES  
SUBPLATES  
w/ CIRCUITS  
COVER  
PLATES  
HEADERS/  
JUNCTIONS  
DIN  
BODIES  
VALVE PACKS  
ACCESSORIES  
& CUSTOMS  
TECHNICAL  
INFO



### PART NUMBER SYSTEM

Aluminum D05H Side Ported Subplate with SAE 16 Ports & Pilot Ports Example: **SPXXA05HSPSHUAE**

TYPE	MATERIAL	VALVE PATTERN	PORTING STYLE	PORT CODE	MOUNTING THREADS & KIT	PILOT PORT OPTIONS
SPXX	Subplate					
A	Aluminum					
D	Ductile Iron					
05H	(USA Standard) NFPA T3.5.1-D05 Alt B					
05E	ISO 4401-05-05 (EURO) NFPA T3.5.1-D05 Alt A					
BP	Bottom Ported Only					
SB	Side Ported with Bottom P & T Ports					
SP	Side Ported only					
ST	Side Ported with 1" NPTF "T" Port on Bottom only					
U	UNC Std for SAE & NPT	D05 Valve	1/4"-20 UNC x .75 dp			
M	Metric Std for BSP* & Metric	D05 Valve	M6 x 1.00 x .75 dp			
		Subplate	3/8"-16 SHCS			
		Subplate	M10 x 1.50 SHCS			
AA*	See Note Below					
AE	X & Y Ports					

CODE	TYPE	P, T, A and B	X & Y
SH	SAE	16	6
NH	NPTF	1"	1/4"
BH	BSPP	1"	1/4"
TH	BSPT	1"	1/4"
MH	METRIC	M33	M10

**NOTE:** \* = NON-STANDARD OPTION  
Use "05T" for Valve Pattern Code when Subplate with no Pilot Ports is required  
Example: SPXXA05TSPSHUAA

## D07 Subplate - Nominal 3/4"

**SPXX\_07GSPSFUAE**

UNC Mounting KIT includes:  
2 -3/8"-16 x 2.75"SHCS  
Metric Mounting KIT includes:  
2 -M10-1.5 x 70mm SHCS

**SPXX\_07GBPSFUAE**

UNC Mounting KIT includes:  
2 -3/8"-16 x 3.50"SHCS  
2 -Plugs  
Metric Mounting KIT includes:  
2 -M10-1.5 x 90mm SHCS  
2 -Plugs

**BOTTOM VIEW SPXX\_07GSBSFUAE**

UNC Mounting KIT includes:  
2 -3/8"-16 x 3.50"SHCS  
2 -Plugs  
Metric Mounting KIT includes:  
2 -M10-1.5 x 90mm SHCS  
2 -Plugs

**BOTTOM VIEW SPXX\_07GSTSFUAE**

UNC Mounting KIT includes:  
2 -3/8"-16 x 3.50"SHCS  
Metric Mounting KIT includes:  
2 -M10-1.5 x 90mm SHCS

3/4" NPTF Port

**BOTTOM VIEW SPXX\_07GSPSFUAE**

UNC Mounting KIT includes:  
2 -3/8"-16 x 2.75"SHCS  
Metric Mounting KIT includes:  
2 -M10-1.5 x 70mm SHCS

**BOTTOM VIEW SPXX\_07GBPSFUAE**

UNC Mounting KIT includes:  
2 -3/8"-16 x 2.75"SHCS  
Metric Mounting KIT includes:  
2 -M10-1.5 x 70mm SHCS

### PART NUMBER SYSTEM

Aluminum D07 Side Ported Subplate with SAE 12 Ports & Pilot Ports Example: **SPXXA07GSPSFUAE**

TYPE	MATERIAL	VALVE PATTERN	PORTING STYLE	PORT CODE	MOUNTING THREADS & KIT	PILOT PORT OPTIONS
SPXX	Subplate					
A	Aluminum					
D	Ductile Iron					
07G	ISO 4401-07-06 NFPA T3.5.1-D07					
		BP	Bottom Ported Only			
		SB	Side Ported with Bottom P & T Ports			
		SP	Side Ported only			
		ST	Side Ported with 3/4" NPTF "T" Port on Bottom only			
				U	UNC Std for SAE & NPT	D07 Valve 3/8"-16 UNC x 1.00" dp 1/4"-20 UNC x 0.75" dp
				M	Metric Std for BSP* & Metric	D07 Valve M10 x 1.50 x 1.00" dp M6 x 1.00 x .75" dp
						Subplate 3/8"-16 UNC SHCS M10 x 1.5 SHCS
						AA* None
						AE X & Y Ports

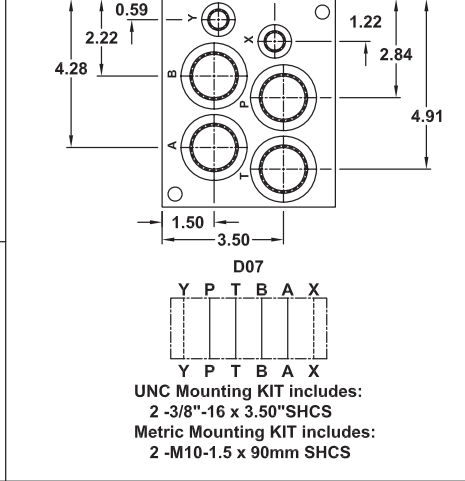
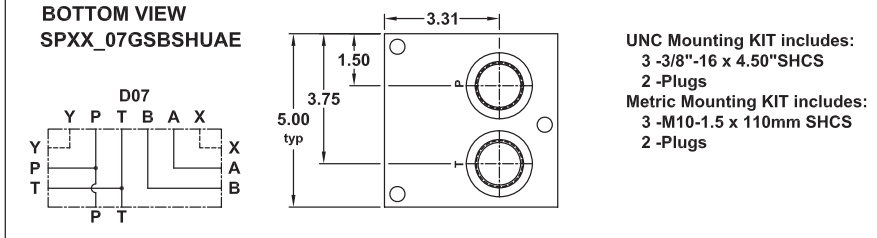
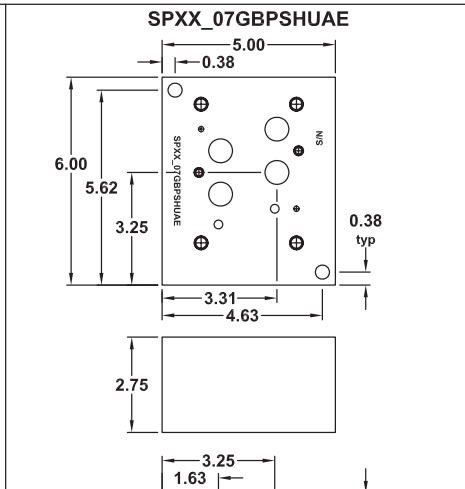
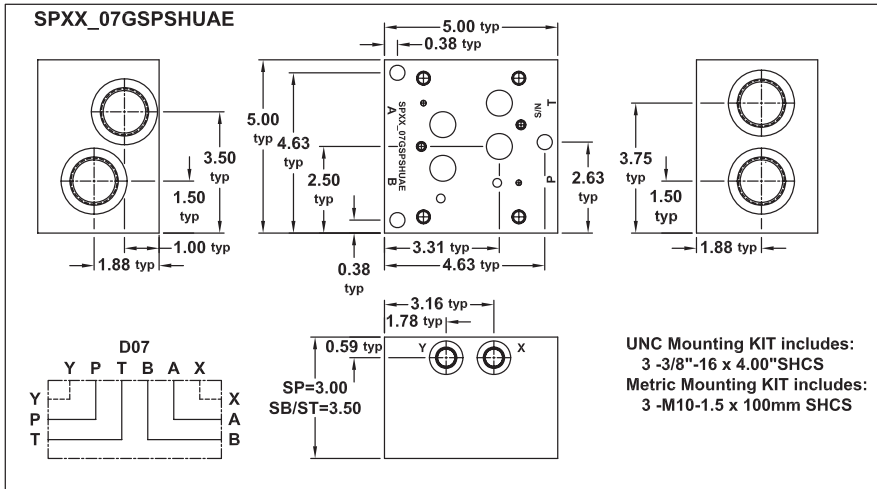
  

CODE	TYPE	P, T, A and B	X & Y
SF	SAE	12	6
NF	NPTF	3/4"	1/4"
BF	BSPP	3/4"	1/4"
TF	BSPT	3/4"	1/4"
MF	METRIC	M27	M10

\* = NON-STANDARD OPTION

**D07 Subplate - Nominal 1"**

BAR  
MANIFOLDS  
TAPPING  
PLATES  
VALVE  
ADAPTERS  
SUBPLATES  
SUBPLATES  
w/ CIRCUITS  
COVER  
PLATES  
HEADERS/  
JUNCTIONS  
DIN  
BODIES  
VALVE PACKS  
ACCESSORIES  
& CUSTOMS  
TECHNICAL  
INFO



**PART NUMBER SYSTEM**

Aluminum D07 Side Ported Subplate with SAE 16 Ports & Pilot Ports Example: **SPXXA07GSPSHUAE**

TYPE	MATERIAL	VALVE PATTERN	PORTING STYLE	PORT CODE	MOUNTING THREADS & KIT	PILOT PORT OPTIONS
SPXX	Subplate	BP Bottom Ported Only	SB Side Ported with Bottom P & T Ports	SP Side Ported only	ST Side Ported with 1" NPTF "T" Port on Bottom only	U UNC Std for SAE & NPT D07 Valve: 3/8"-16 UNC x 1.00" dp 1/4"-20 UNC x 0.75" dp Subplate: 3/8"-16 UNC SHCS
A	Aluminum	SP	ST		M Metric Std for BSP* & Metric D07 Valve: M10 x 1.50 x 1.00" dp M6 x 1.00 x .75" dp Subplate: M10 x 1.5 SHCS	AA* None
D	Ductile Iron					AE X & Y Ports
07G	ISO 4401-07-06 NFPA T3.5.1-D07					

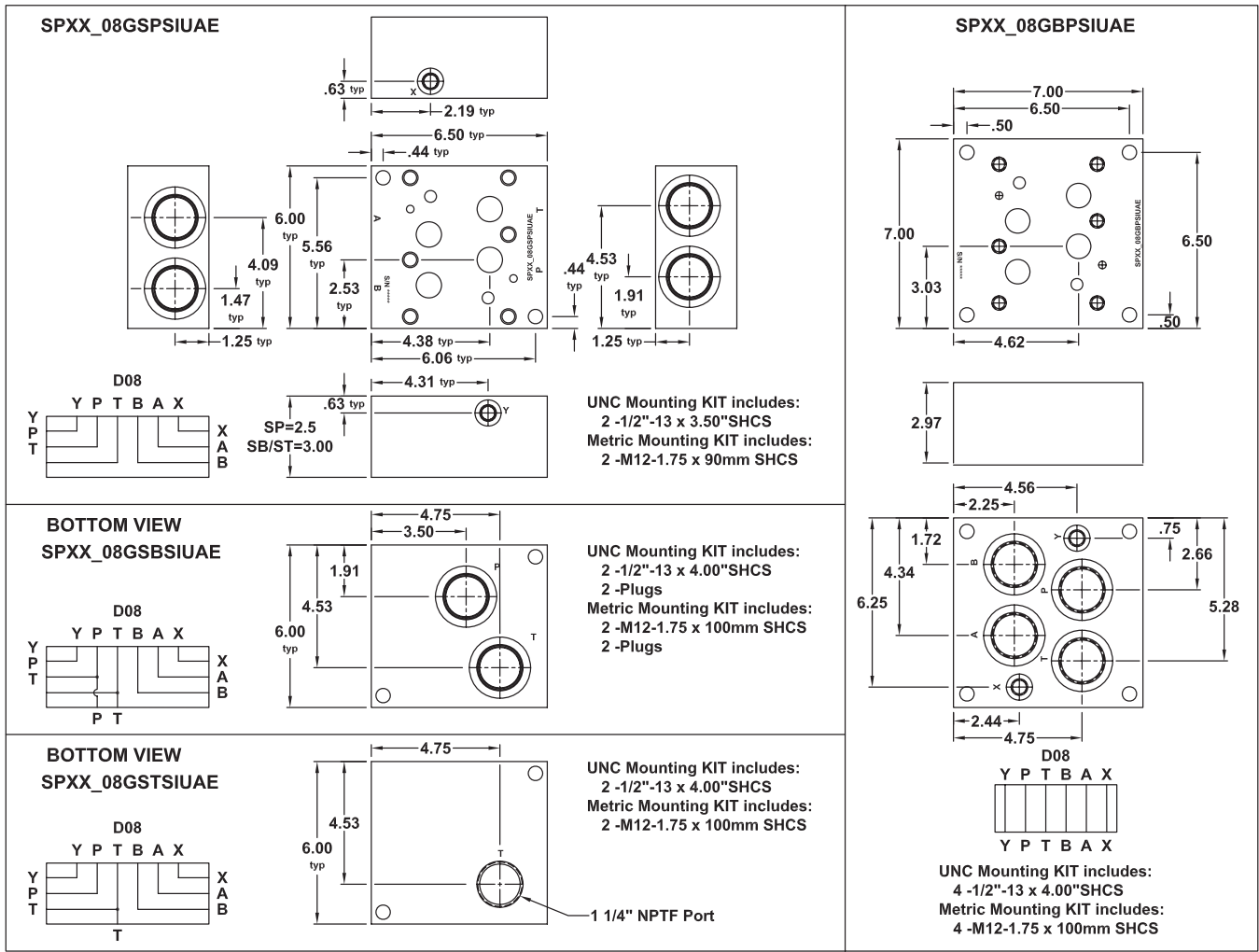
CODE	TYPE	P, T, A and B	X & Y
SH	SAE	16	6
NH	NPTF	1"	1/4"
BH	BSPP	1"	1/4"
TH	BSPT	1"	1/4"
MH	METRIC	M33	M10

\* = NON-STANDARD OPTION



**D08 Subplate - Nominal 1-1/4"**

BAR MANIFOLDS  
TAPPING PLATES  
VALVE ADAPTERS  
SUBPLATES  
SUBPLATES w/ CIRCUITS  
COVER PLATES  
HEADERS/JUNCTIONS  
DIN BODIES  
ACCESSORIES  
VALVE PACKS & CUSTOMS  
TECHNICAL INFO



**PART NUMBER SYSTEM**

Aluminum D08 Side Ported Sub-base with SAE 20 Ports & Pilot Ports Example: **SPXXA08GSPSIUAE**

