

Index

Valve Adapters

| | |
|---|-----------------|
| D02 to D03 Valve Adapter - AB Oriented, Short & Tall Styles | 3.02.01 |
| D03 to D02 Valve Adapter - AB Oriented | 3.02.01 |
| D03 to D05 Valve Adapter - AB or BA Oriented, Short Style | 3.02.02 |
| D03 to D05 Valve Adapter - AB or BA Oriented, Tall Style | 3.02.02 |
| D05 to D03 Valve Adapter - AB Oriented | 3.03.01 |
| D05H/HE to D03 Valve Adapter - AB Oriented | 3.03.01 |
| D05 to D03 Valve Adapter - BA Oriented | 3.03.02 |
| D05H/HE to D03 Valve Adapter - BA Oriented | 3.03.02 |
| D05/D05H/D05HE to D05H Valve Adapter with External Pilots | 3.03.03 |
| D05/D05H/D05HE to D05HE Valve Adapter with External Pilots | 3.03.03 |
| D05H to D05HE Valve Adapter - AB Oriented | 3.03.04 |
| D05HE to D05H Valve Adapter - AB Oriented | 3.03.04 |
| D05 to D05"L" - Valve Adapter with External Drain | 3.03.05 |
| D05H/HE to D05"L" Valve Adapter with External Drain | 3.03.05 |
| D07 to D03 Valve Adapter - AB Oriented | 3.04.01 |
| D07 to D05 Valve Adapter - AB Oriented | 3.04.01 |
| D07 to D05H Valve Adapter - AB Oriented | 3.04.02 |
| D07 to D05HE Valve Adapter - AB Oriented | 3.04.02 |
| D08 to D03 Valve Adapter - AB Oriented | 3.05.01 |
| D08 to D05 Valve Adapter - AB Oriented | 3.05.01 |
| D08 to D05H Valve Adapter - AB Oriented | 3.05.02 |
| D08 to D05HE Valve Adapter - AB Oriented | 3.05.02 |
| D08 to D07 Valve Adapter - AB Oriented | 3.05.03 |
| D10 to D07 Valve Adapter - AB Oriented | 3.06.01 |
| D10 to D08 Valve Adapter - AB Oriented | 3.06.01 |
| Obsolete Valve Adapters | Consult Factory |
| Rotators, Spacers, Specials, Servo/Servo Valve Adapters | Consult Factory |
| Servo/Directional, Directional/Servo Valve Adapters | Consult Factory |

| |
|-----------------------------|
| BAR MANIFOLDS |
| TAPPING PLATES |
| VALVE ADAPTERS |
| SUBPLATES |
| SUBPLATES w/ CIRCUITS |
| COVER PLATES |
| HEADERS/ JUNCTIONS |
| DIN BODIES |
| ACCESSORIES |
| VALVE PACKS & CUSTOMS |
| TECHNICAL INFO |

Product Tips and Features

BAR
MANIFOLDSTAPPING
PLATESVALVE
ADAPTERS

SUBPLATES

SUBPLATES
w/ CIRCUITSCOVER
PLATESHEADERS/
JUNCTIONSDIN
BODIES

ACCESSORIES

VALVE PACKS
& CUSTOMSTECHNICAL
INFO

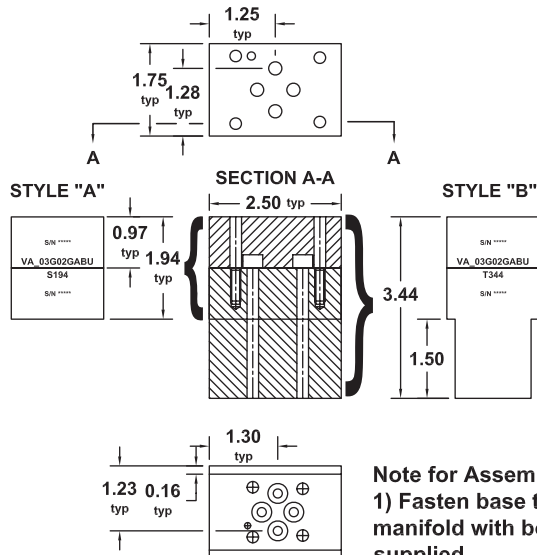
Valve Adapters

Valve Adapters are transition plates designed to provide a means to mount different valve types to existing manifold interfaces.

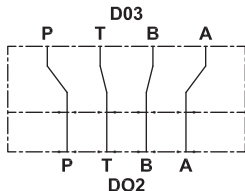
1. Standard materials are Aluminum and Ductile Iron. Other materials including Mild Steel or Stainless Steel are optionally available.
2. Special Finishes including Black Oxide, Electroless Nickel Plating or Anodizing are optionally available.
3. UNC or Metric mounting kits with Viton O Rings and locating pins are provided.
4. D05(H or HE) to D03 Valve Adapters with A and B oriented are supplied with A & B Gauge Parts as standard. Gauge Ports are optionally available on other valve adapters.
5. All clearance holes to manifold interface are provided for all valve adapters to ensure structural integrity.
6. All D05H and D05HE Solenoid Interfaces are designed with both tank ports connected to the tank port of the mating manifold interface to ensure maximum valve performance.
7. External Pilot Port Valve Adapters for interface X & Y ports are available. Contact Factory for Part Numbers of Models not shown.
8. "L" Port Valve Adapters are available. Contact Factory for Part Numbers.
9. Gasket Mount Pressure or Flow Controls to Current ISO Interface Valve Adapters are available. Contact Factory for Part Numbers of Models not shown.
10. Obsolete to Current ISO Interface Valve Adapters are available. Contact Factory for Part Numbers.
11. Servo Valve Adapters are available. Contact Factory for Part Numbers.

D02 to D03 - Valve Adapters - D03 to D02

VA_02G03GAB*A194 / VA_02G03GAB*B344



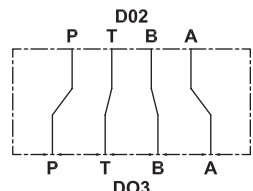
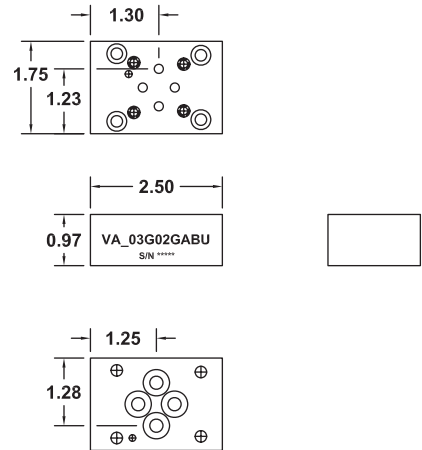
Note for Assembly:
 1) Fasten base to D02 manifold with bolts supplied.
 2) D03 Threads begin at 0.97" depth from interface surface.



UNC mounting kit includes:
 4 - #10-24 x 1.50" SHCS
 or
 4 - #10-24 x 3.00" SHCS
 8 - O10 O-ring viton
 2 - Split Pin

Metric mounting kit includes:
 4 - M5 x 0.80 x 35mm SHCS
 or
 4 - M5 x 0.80 x 70mm SHCS
 8 - O10 O-ring viton
 2 - Split Pin

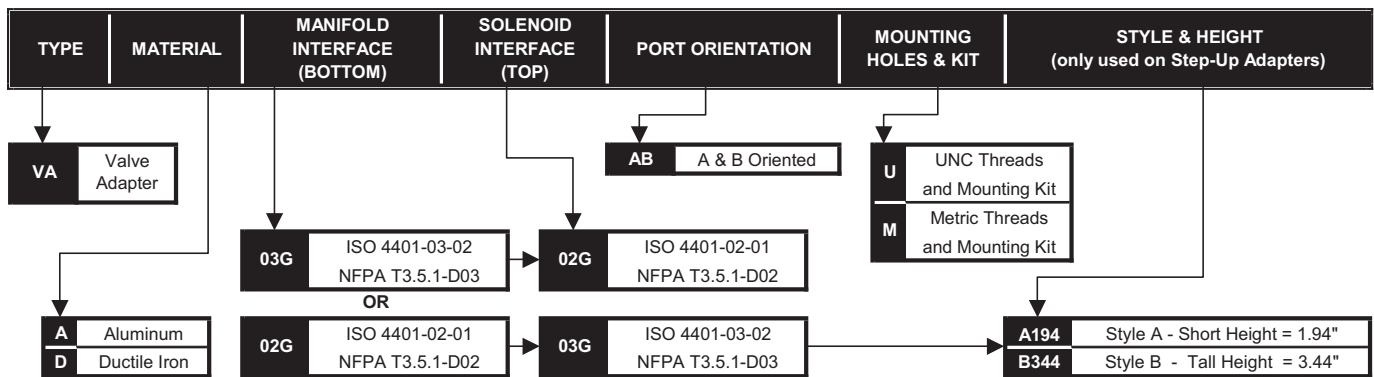
VA_03G02GAB*



UNC mounting kit includes:
 4 - #10-24 x 1.00" SHCS
 4 - O12 O-ring viton
 1 - Split Pin

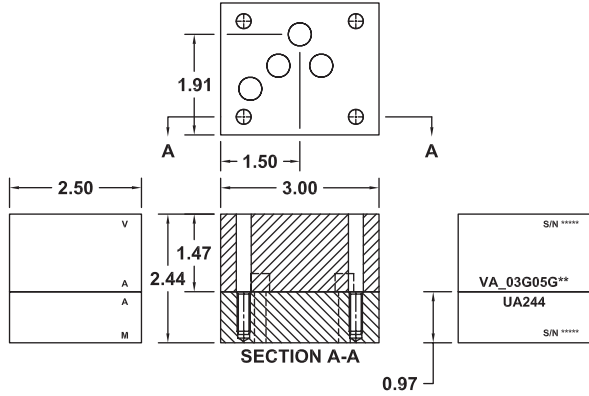
Metric mounting kit includes:
 4 - M5 x 0.80 x 25mm SHCS
 4 - O12 O-ring viton
 1 - Split Pin

PART NUMBER SYSTEM

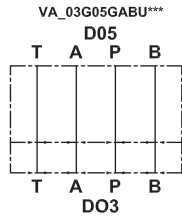


D03 to D05 Step-Up Valve Adapters

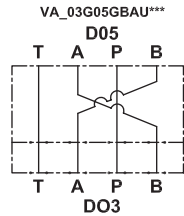
VA_03G05GUA244
STYLE A**



Note for Assembly:
1) Fasten base to D03 manifold with bolts supplied.
2) D05 Threads begin at 1.47" depth from interface surface.

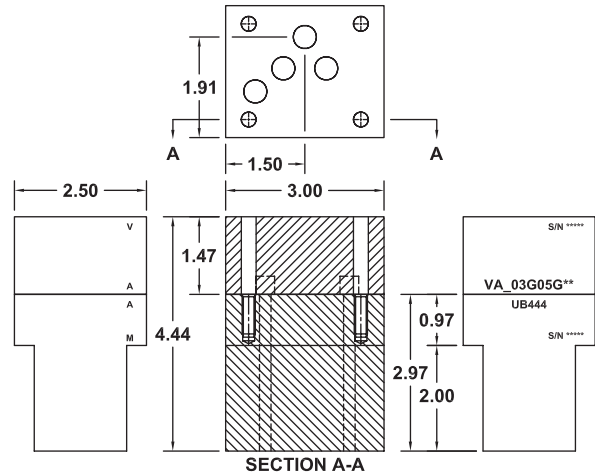


UNC mounting kit includes:
4 - 10-24 x 1.50" SHCS
8 - O-ring viton
2 - Split Pin

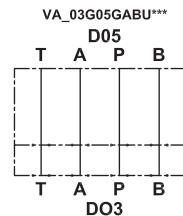


Metric mounting kit includes:
4 - M5 x .8 x 35mm SHCS
8 - O-ring viton
2 - Split Pin

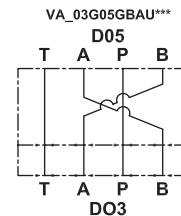
VA_03G05GUB444
STYLE B**



Note for Assembly:
1) Fasten base to D03 manifold with bolts supplied.
2) D05 Threads begin at 1.47" depth from interface surface.

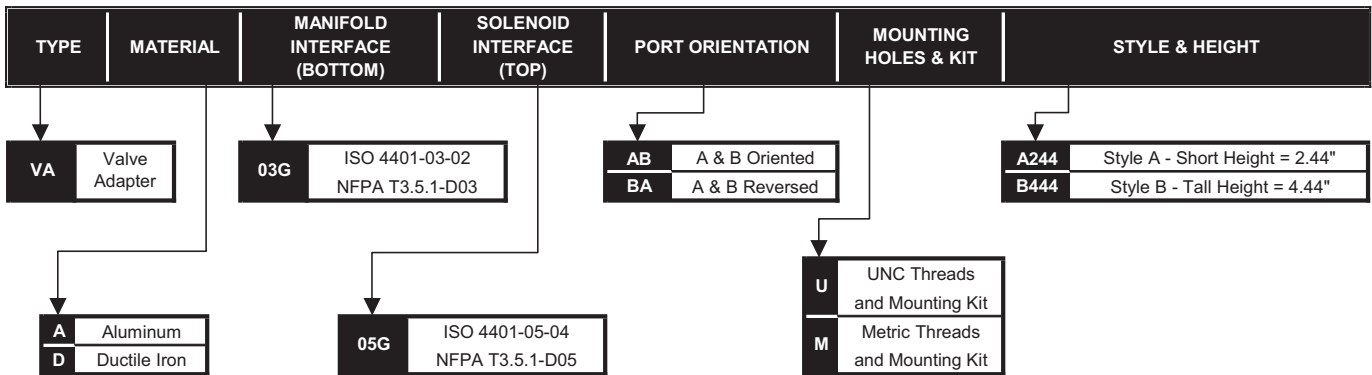


UNC mounting kit includes:
4 - 10-24 x 3.50" SHCS
8 - O-ring viton
2 - Split Pin



Metric mounting kit includes:
4 - M5 x .8 x 90 mm SHCS
8 - O-ring viton
2 - Split Pin

PART NUMBER SYSTEM



D05 to D03 - Valve Adapters "AB" - D05H(E) to D03

BAR
MANIFOLDS

TAPPING
PLATES

VALVE
ADAPTERS

SUBPLATES

SUBPLATES
w/
CIRCUITS

COVER
PLATES

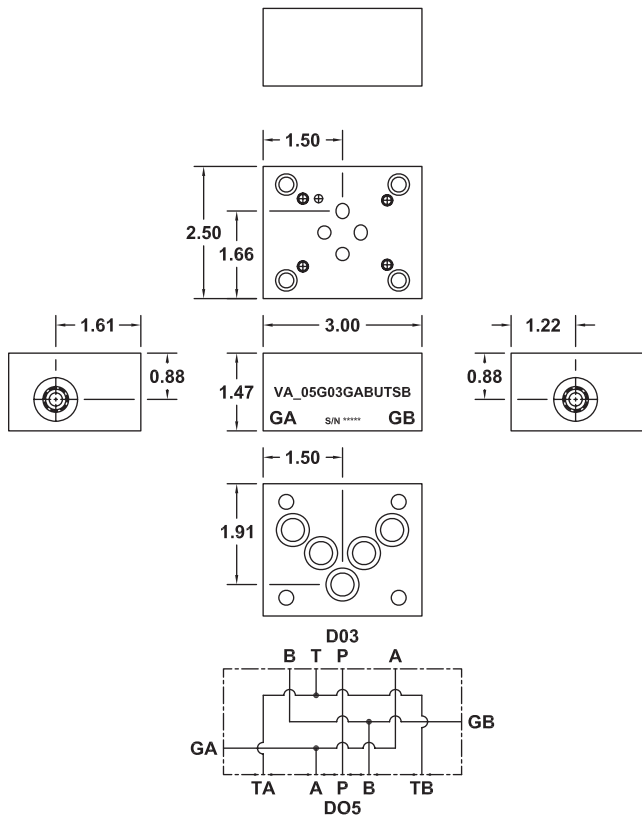
HEADERS/
JUNCTIONS

DIN
BODIES

ACCESSORIES
VALVE PACKS
& CUSTOMS

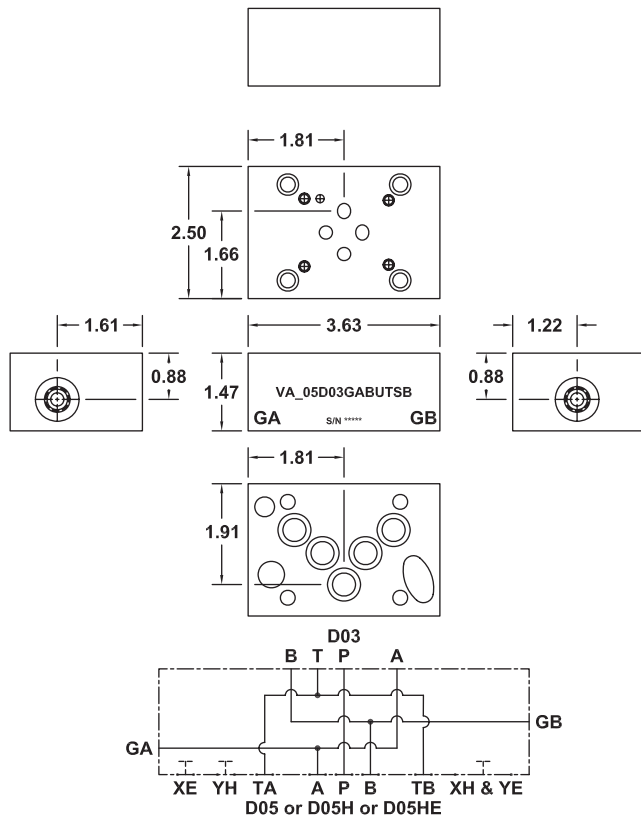
TECHNICAL
INFO

VA_05G03GAB*T**



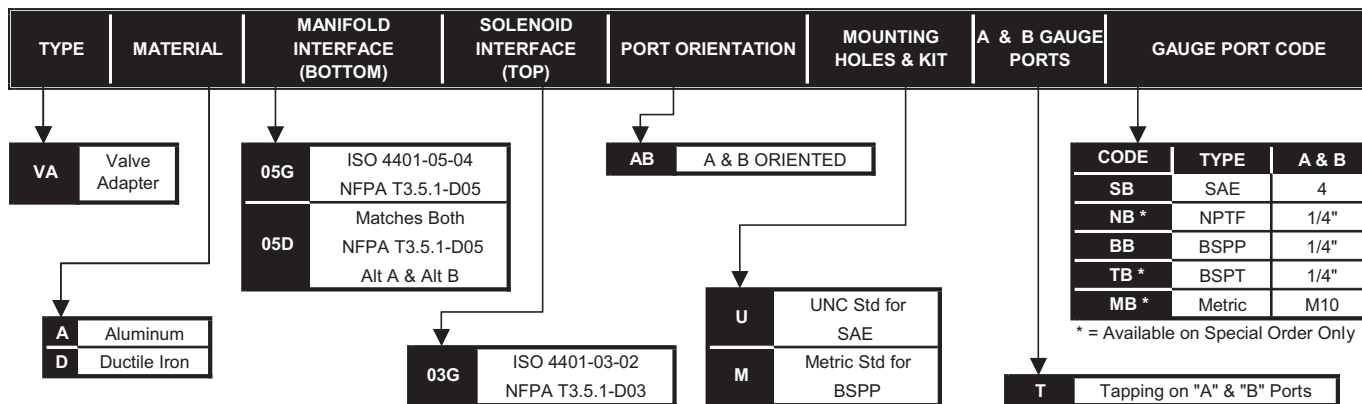
- UNC mounting kit includes: Metric mounting kit includes:
- 4 - 1/4"-20 x 1.00" SHCS
 - 5 - 014 O-ring viton
 - 2 - plug viton

VA_05D03GAB*T**



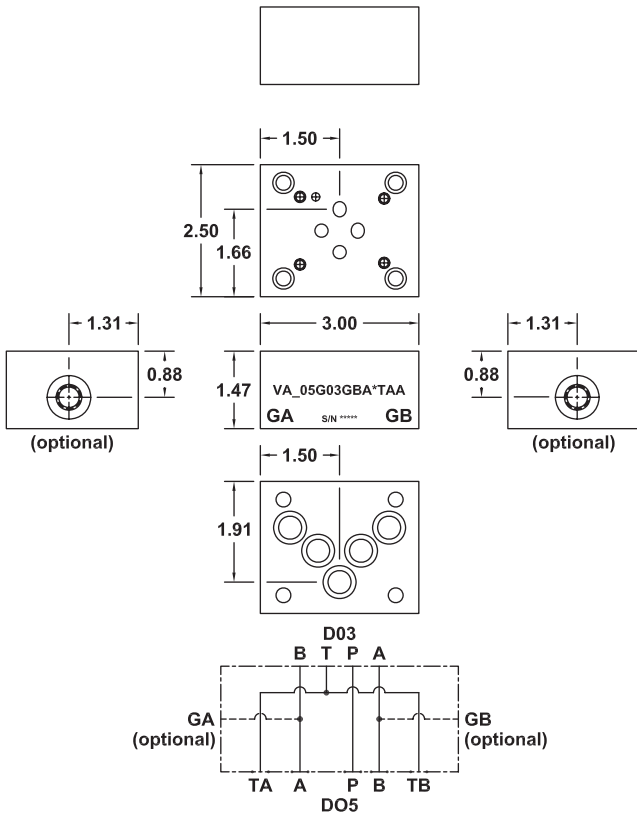
- UNC mounting kit includes: Metric mounting kit includes:
- 4 - 1/4"-20 x 1.00" SHCS
 - 5 - 014 O-ring viton
 - 1 - 010 O-ring viton
 - 1 - 012 O-ring viton
 - 1 - 016 O-ring viton
 - 2 - plug viton

PART NUMBER SYSTEM



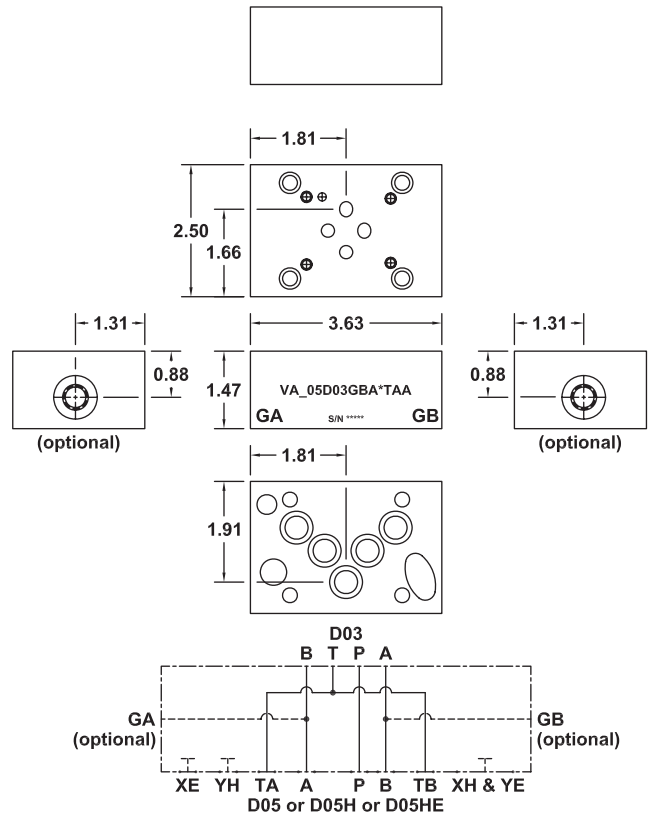
D05 to D03 - Valve Adapters "BA" - D05H(E) to D03

VA_05G03GBA*TAA



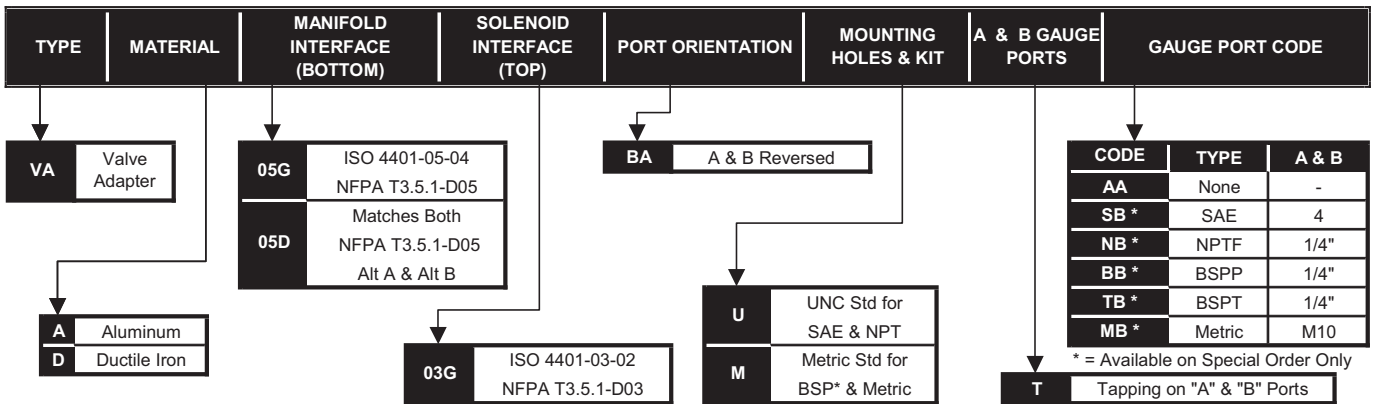
- UNC mounting kit includes: Metric mounting kit includes:
- 4 - 1/4"-20 x 1.00" SHCS
 - 5 - 014 O-ring viton
 - 2 - plug viton (Optional)

VA_05D03GBA*TAA



- UNC mounting kit includes: Metric mounting kit includes:
- 4 - 1/4"-20 x 1.00" SHCS
 - 5 - 014 O-ring viton
 - 1 - 010 O-ring viton
 - 1 - 012 O-ring viton
 - 1 - 016 O-ring viton
 - 2 - plug viton (Optional)

PART NUMBER SYSTEM

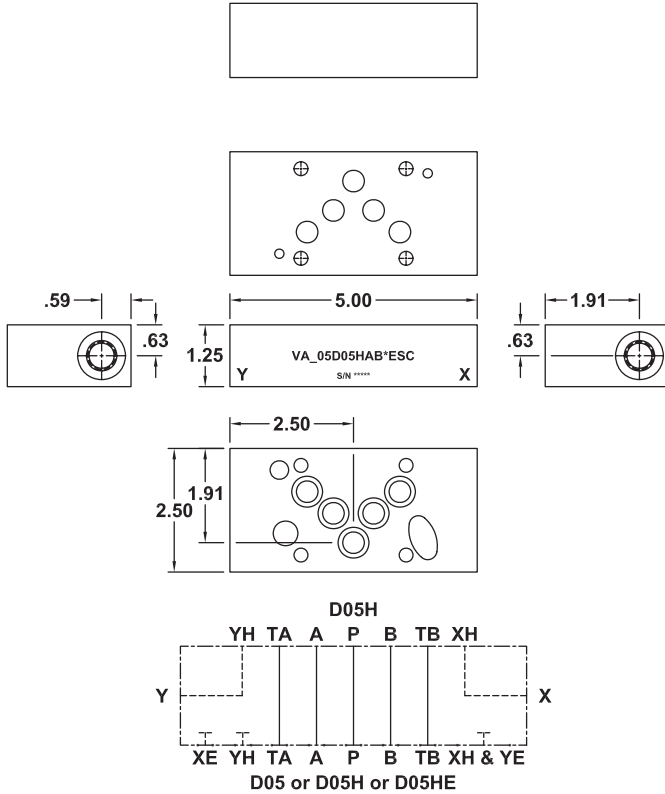


D05 to D05H - Valve Adapters - D05 to D05HE

BAR MANIFOLDS
TAPPING PLATES
VALVE ADAPTERS
SUBPLATES
SUBPLATES w/ CIRCUITS
COVER PLATES
HEADERS/JUNCTIONS
DIN BODIES
ACCESSORIES
VALVE PACKS & CUSTOMS
TECHNICAL INFO

External X&Y Port Connections

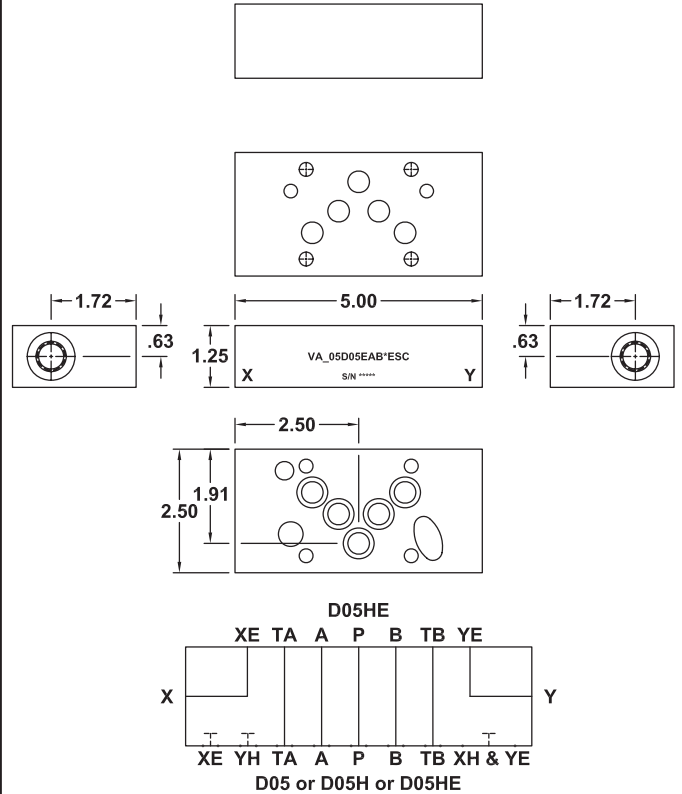
VA_05D05HAB*ESC



- Adapter includes:
 5 - 014 O-ring viton
 1 - 010 O-ring viton
 1 - 012 O-ring viton
 1 - 016 O-ring viton

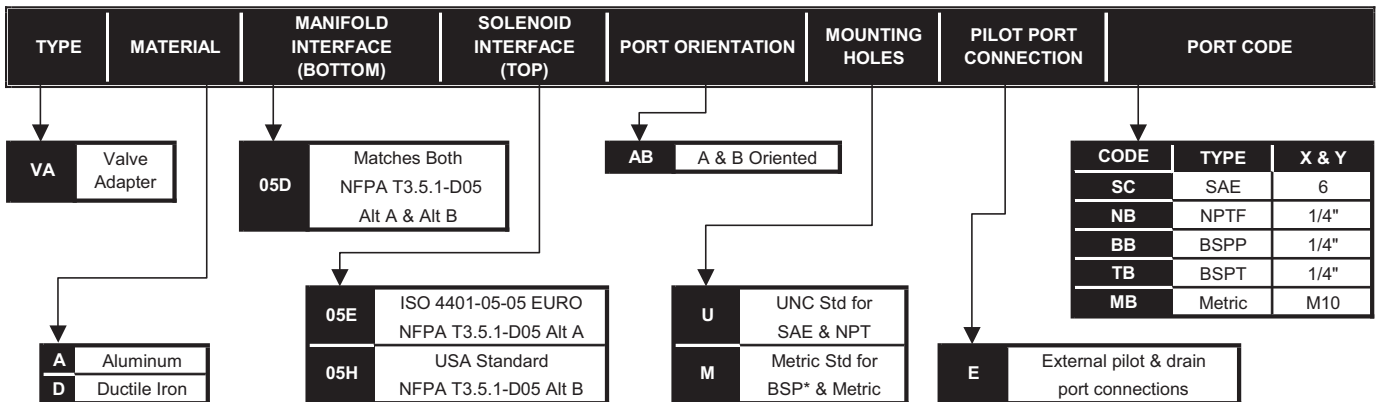
External X&Y Port Connections

VA_05D05EAB*ESC



- Adapter includes:
 5 - 014 O-ring viton
 1 - 010 O-ring viton
 1 - 012 O-ring viton
 1 - 016 O-ring viton

PART NUMBER SYSTEM



D05H to D05HE - Valve Adapters - D05HE to D05H

VA_05H05EAB*

VA_05H05EAB*
S/N *****

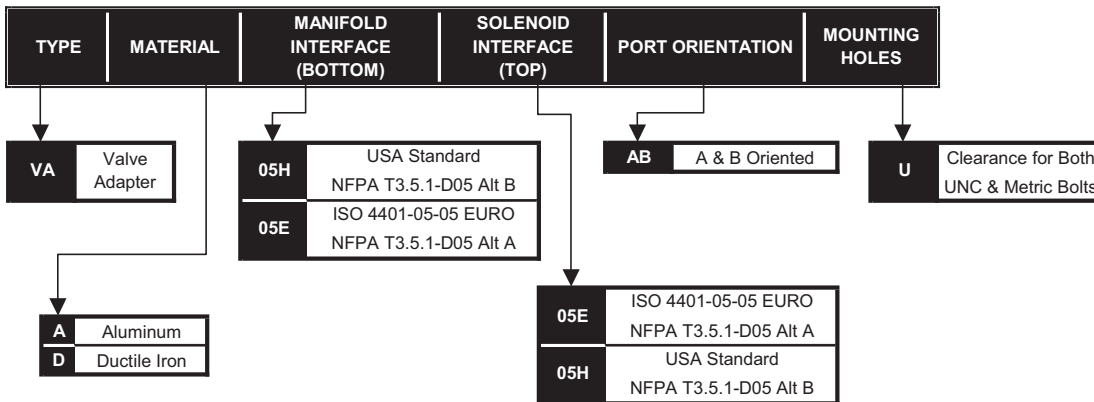
Adapter includes:
5 - 014 O-ring viton
2 - 010 O-ring viton

VA_05E05HAB*

VA_05E05HAB*
S/N *****

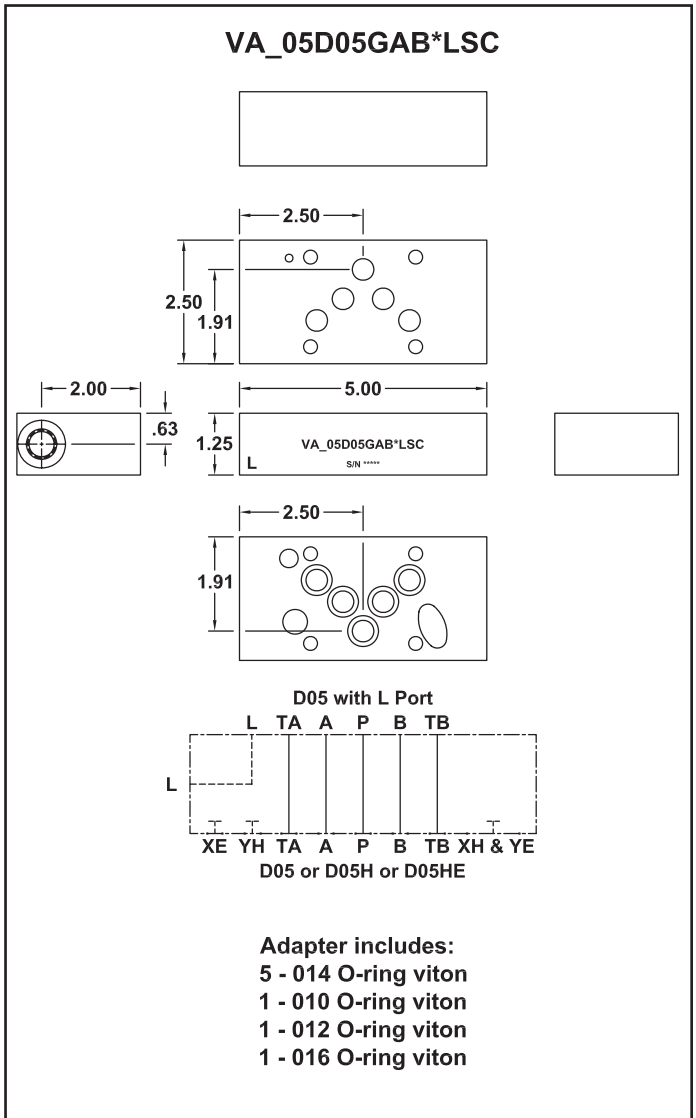
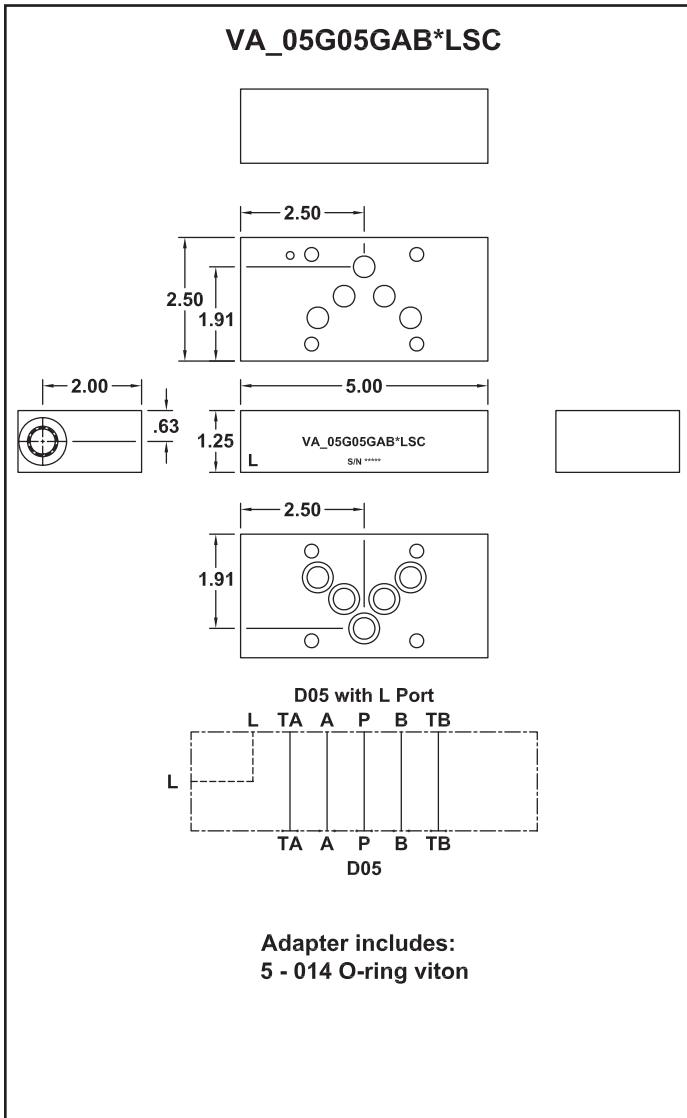
Adapter includes:
5 - 014 O-ring viton
2 - 012 O-ring viton

PART NUMBER SYSTEM

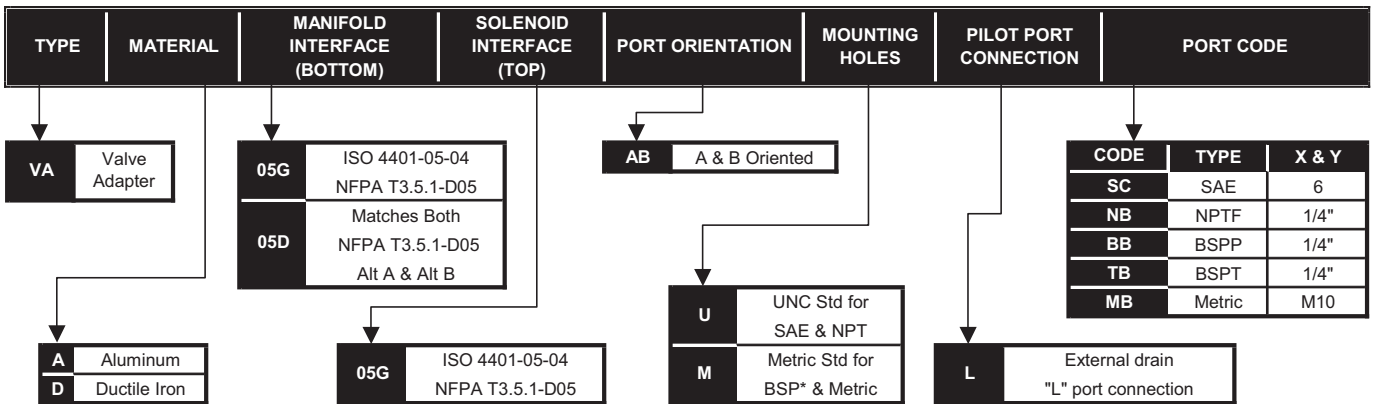


D05 to D05"L" - Valve Adapters - D05H(E) to D05"L"

BAR MANIFOLDS
TAPPING PLATES
VALVE ADAPTERS
SUBPLATES
SUBPLATES w/ CIRCUITS
COVER PLATES
HEADERS/JUNCTIONS
DIN BODIES
ACCESSORIES
VALVE PACKS & CUSTOMS
TECHNICAL INFO

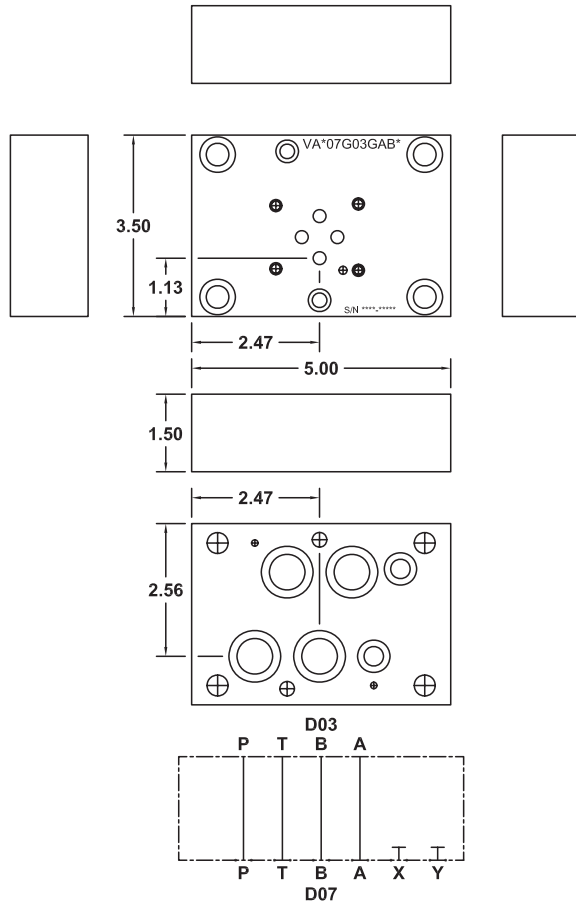


PART NUMBER SYSTEM



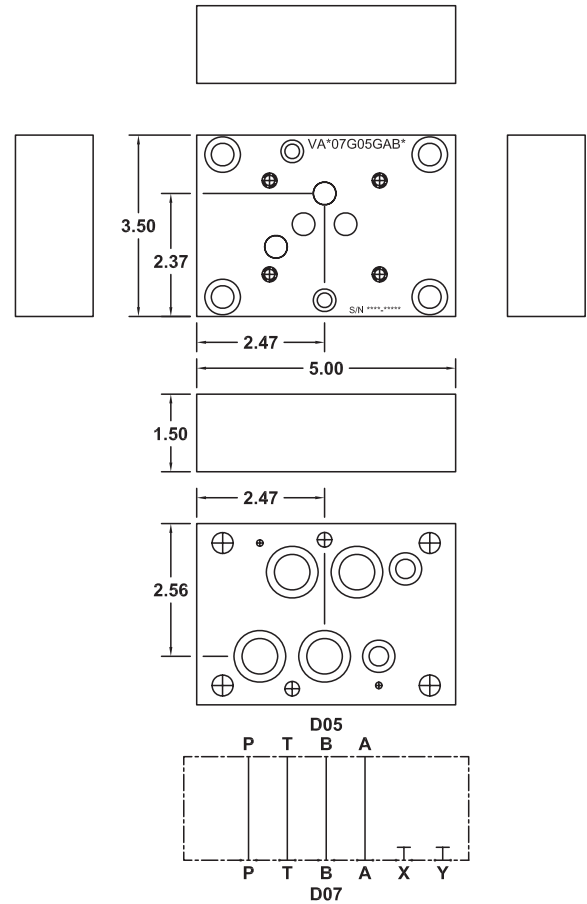
D07 to D03 - Valve Adapters - D07 to D05

VA_07G03GAB*



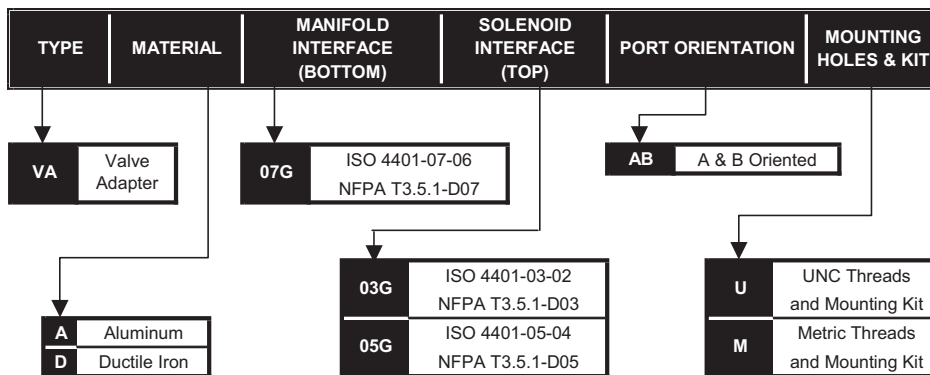
- UNC mounting kit includes: 4 - 3/8"-16 x 1.50" SHCS
2 - 1/4"-20 x 1.50" SHCS
4 - 118 O-ring viton
2 - 111 O-ring viton
- Metric mounting kit includes: 4 - M10 x 1.50 x 40mm SHCS
2 - M6 x 1.00 x 40mm SHCS
4 - 118 O-ring viton
2 - 111 O-ring viton

VA_07G05GAB*



- UNC mounting kit includes: 4 - 3/8"-16 x 1.50" SHCS
2 - 1/4"-20 x 1.50" SHCS
4 - 118 O-ring viton
2 - 111 O-ring viton
- Metric mounting kit includes: 4 - M10 x 1.50 x 40mm SHCS
2 - M6 x 1.00 x 40mm SHCS
4 - 118 O-ring viton
2 - 111 O-ring viton

PART NUMBER SYSTEM



D07 to D05H - Valve Adapters - D07 to D05HE

BAR
MANIFOLDS

TAPPING
PLATES

VALVE
ADAPTERS

SUBPLATES

SUBPLATES
w/ CIRCUITS

COVER
PLATES

HEADERS/
JUNCTIONS

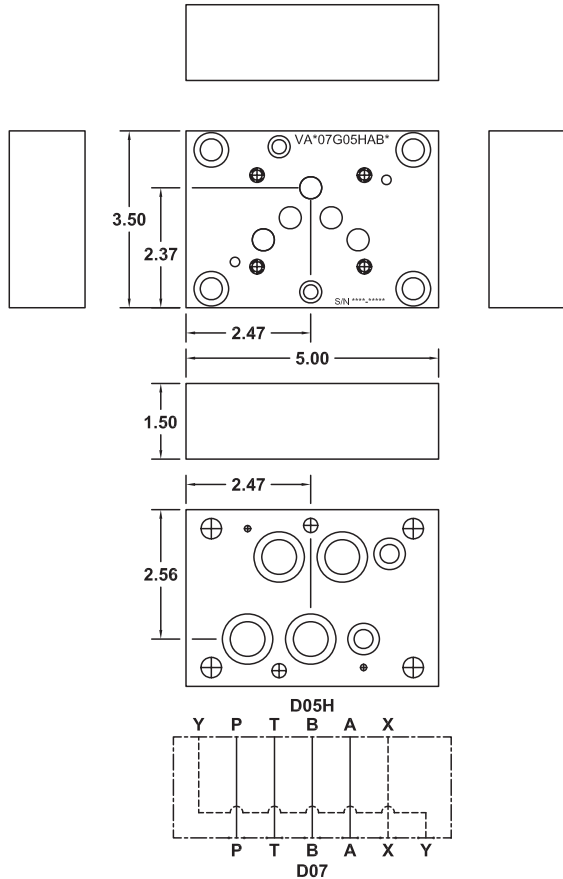
DIN
BODIES

ACCESSORIES

VALVE PACKS
& CUSTOMS

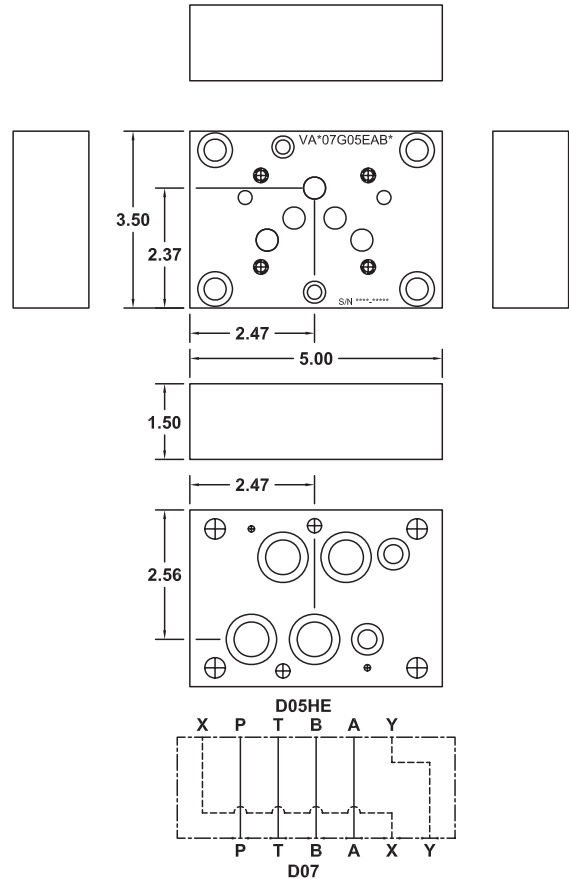
TECHNICAL
INFO

VA_07G05HAB*



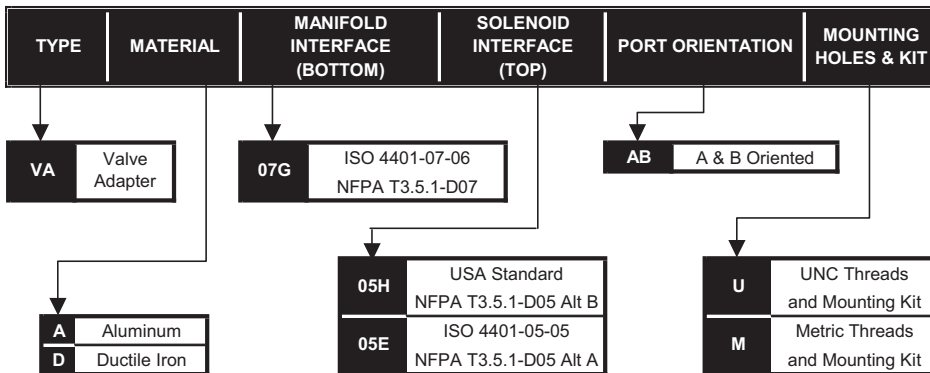
- UNC mounting kit includes: 4 - 3/8"-16 x 1.50" SHCS
2 - 1/4"-20 x 1.50" SHCS
4 - 118 O-ring viton
2 - 111 O-ring viton
2 - pin
- Metric mounting kit includes: 4 - M10 x 1.50 x 40mm SHCS
2 - M6 x 1.00 x 40mm SHCS
4 - 118 O-ring viton
2 - 111 O-ring viton
2 - pin

VA_07G05EAB*



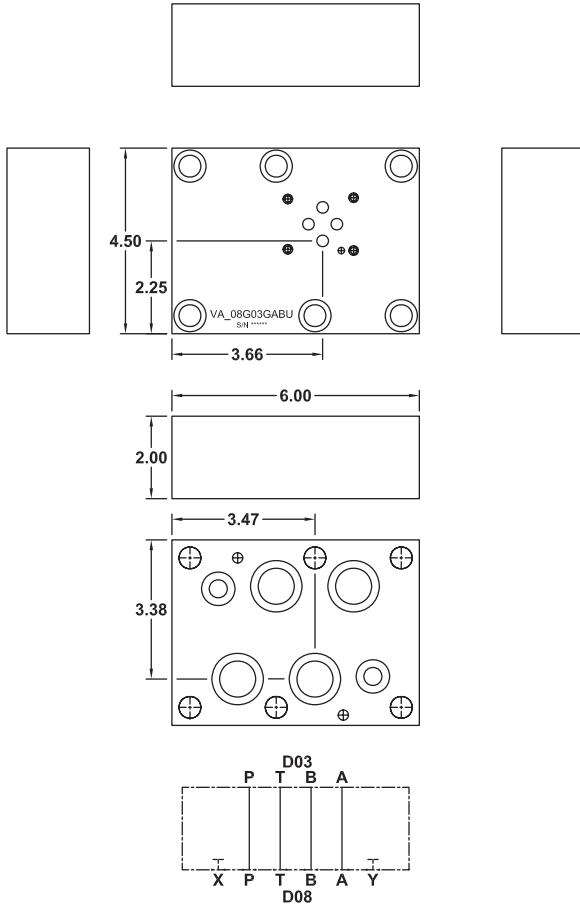
- UNC mounting kit includes: 4 - 3/8"-16 x 1.50" SHCS
2 - 1/4"-20 x 1.50" SHCS
4 - 118 O-ring viton
2 - 111 O-ring viton
2 - pin
- Metric mounting kit includes: 4 - M10 x 1.50 x 40mm SHCS
2 - M6 x 1.00 x 40mm SHCS
4 - 118 O-ring viton
2 - 111 O-ring viton
2 - pin

PART NUMBER SYSTEM



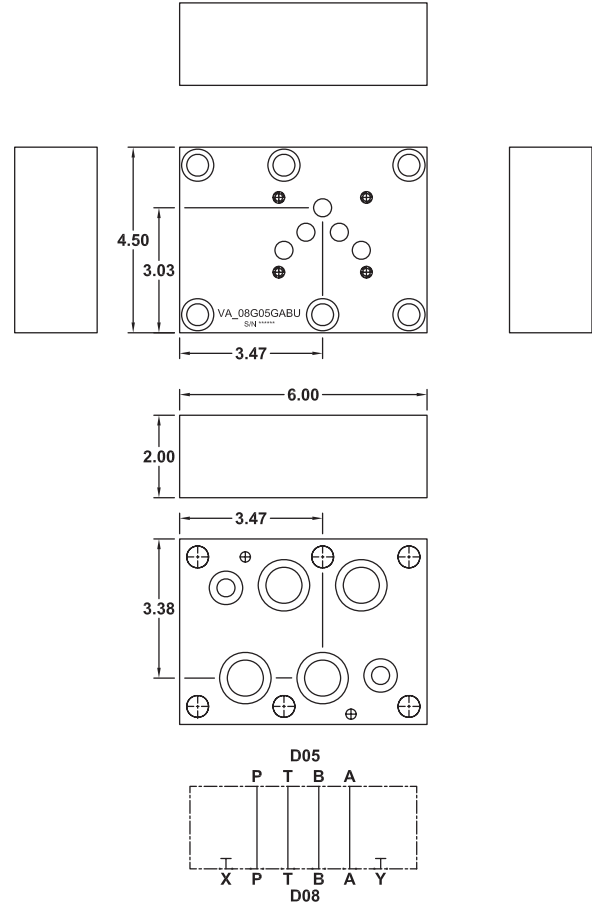
D08 to D03 - Valve Adapters - D08 to D05

VA_08G03GAB*



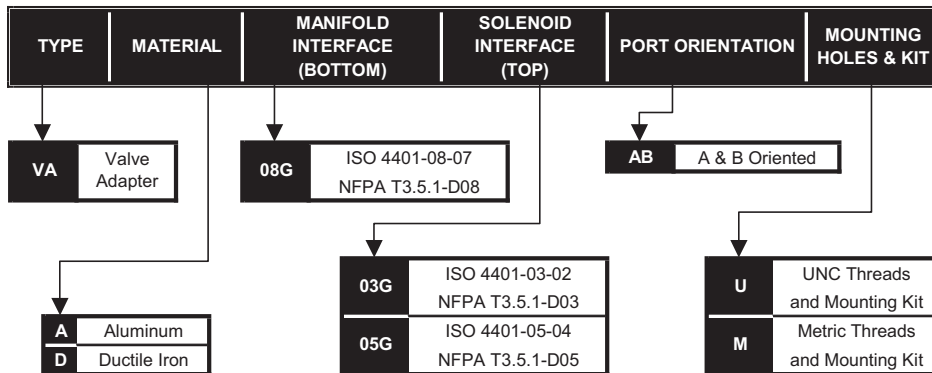
- UNC mounting kit includes: 6 - 1/2"-13 x 2.25" SHCS
4 - 121 O-ring viton
2 - 114 O-ring viton
2 - pin
- Metric mounting kit includes: 6 - M12 x 1.75 x 60mm SHCS
4 - 121 O-ring viton
2 - 114 O-ring viton
2 - pin

VA_08G05GAB*



- UNC mounting kit includes: 6 - 1/2"-13 x 2.25" SHCS
4 - 121 O-ring viton
2 - 114 O-ring viton
2 - pin
- Metric mounting kit includes: 6 - M12 x 1.75 x 60mm SHCS
4 - 121 O-ring viton
2 - 114 O-ring viton
2 - pin

PART NUMBER SYSTEM



D08 to D05H - Valve Adapters - D08 to D05HE

BAR
MANIFOLDS

TAPPING
PLATES

VALVE
ADAPTERS

SUBPLATES

SUBPLATES
w/ CIRCUITS

COVER
PLATES

HEADERS/
JUNCTIONS

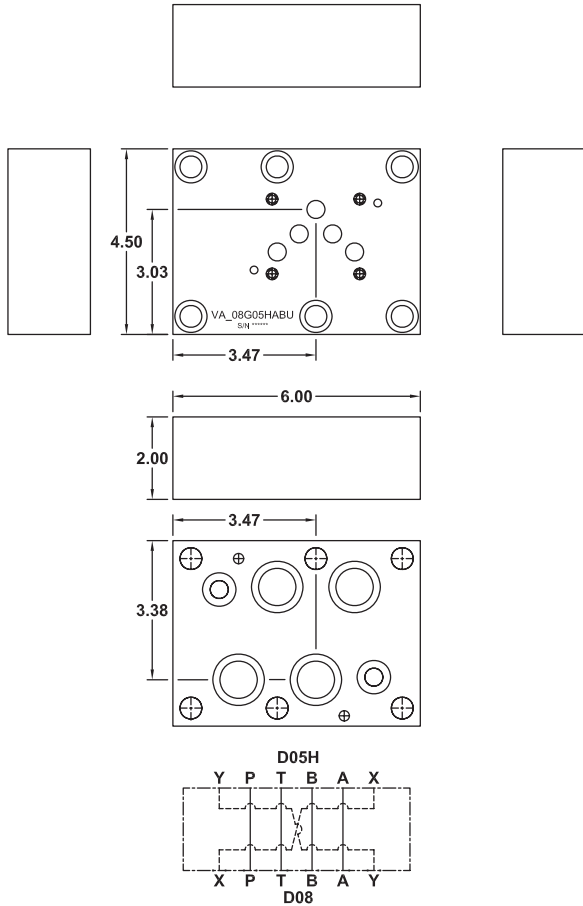
DIN
BODIES

ACCESSORIES

VALVE PACKS
& CUSTOMS

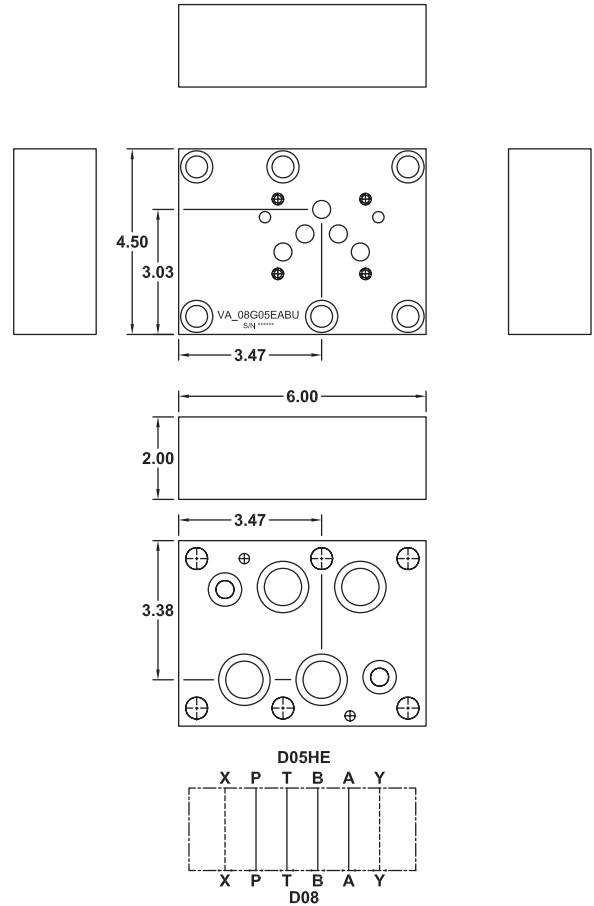
TECHNICAL
INFO

VA_08G05HAB*



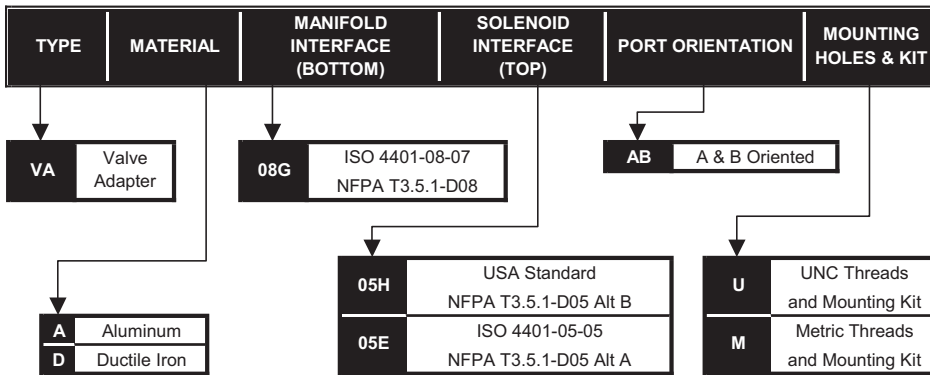
- UNC mounting kit includes:
 6 - 1/2"-13 x 2.25" SHCS
 4 - 121 O-ring viton
 2 - 114 O-ring viton
 2 - pin
- Metric mounting kit includes:
 6 - M12 x 1.75 x 60mm SHCS
 4 - 121 O-ring viton
 2 - 114 O-ring viton
 2 - pin

VA_08G05EAB*



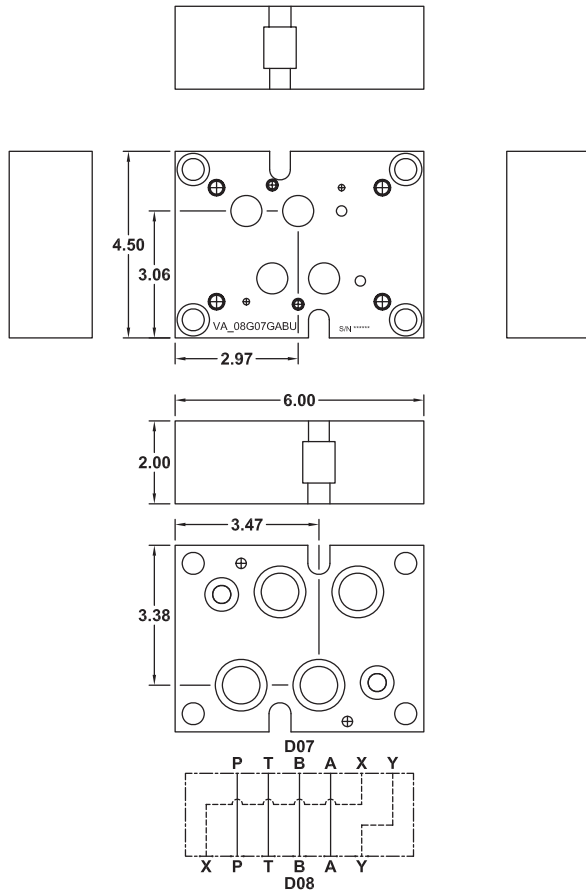
- UNC mounting kit includes:
 6 - 1/2"-13 x 2.25" SHCS
 4 - 121 O-ring viton
 2 - 114 O-ring viton
 2 - pin
- Metric mounting kit includes:
 6 - M12 x 1.75 x 60mm SHCS
 4 - 121 O-ring viton
 2 - 114 O-ring viton
 2 - pin

PART NUMBER SYSTEM



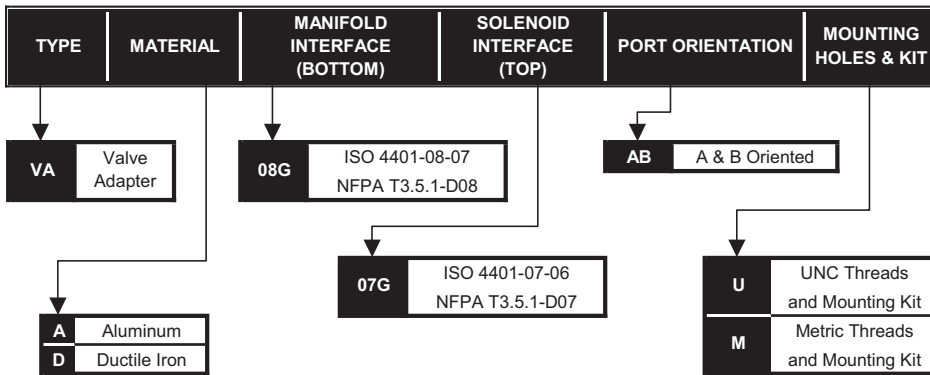
D08 to D07 - Valve Adapter

VA_08G07GAB*



- UNC mounting kit includes: Metric mounting kit includes:
- 4 - 1/2"-13 x 2.25" SHCS
 - 2 - 1/2"-13 x 1.25" SHCS
 - 4 - 121 O-ring viton
 - 2 - 114 O-ring viton
 - 2 - pin
- 4 - M12 x 1.75 x 60mm SHCS
 - 2 - M12 x 1.75 x 30mm SHCS
 - 4 - 121 O-ring viton
 - 2 - 114 O-ring viton
 - 2 - pin

PART NUMBER SYSTEM



D10 to D07 - Valve Adapters - D10 to D08

BAR
MANIFOLDS

TAPPING
PLATES

VALVE
ADAPTERS

SUBPLATES

SUBPLATES
w/ CIRCUITS

COVER
PLATES

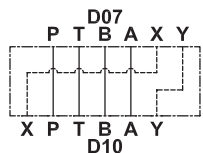
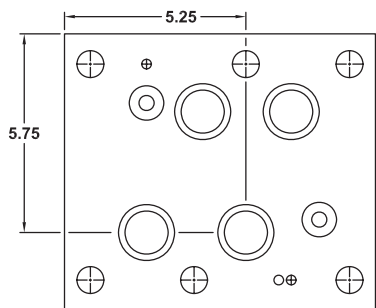
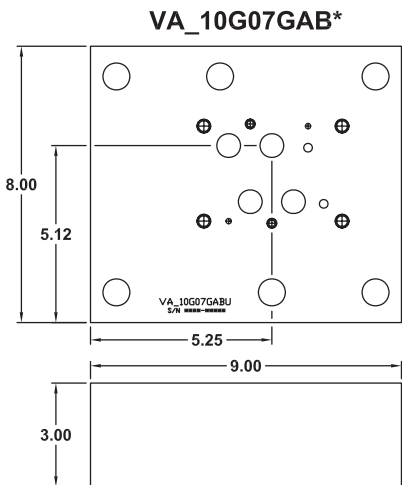
HEADERS/
JUNCTIONS

DIN
BODIES

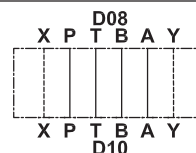
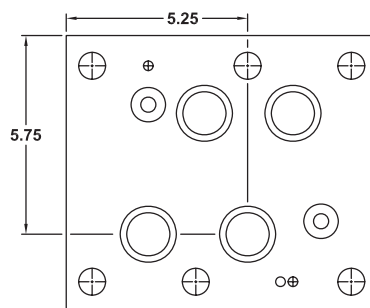
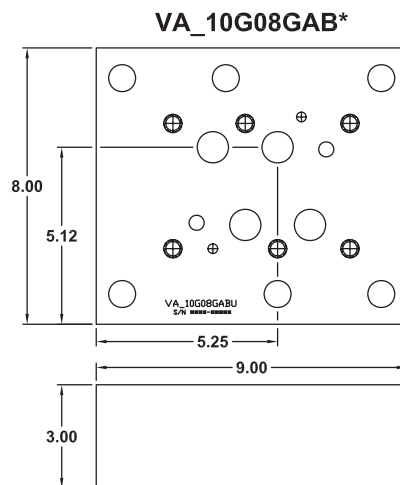
ACCESSORIES

VALVE PACKS
& CUSTOMS

TECHNICAL
INFO

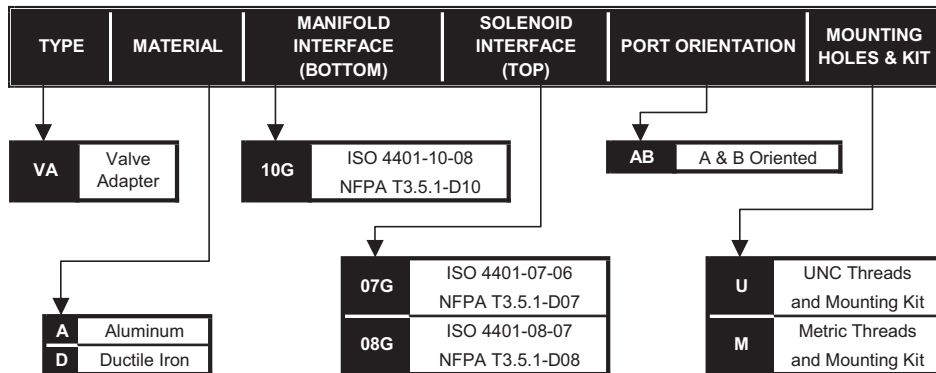


- UNC mounting kit includes: Metric mounting kit includes:
- 6 - 3/4"-10 x 4.50" SHCS
 - 4 - 220 O-ring viton
 - 2 - 210 O-ring viton
 - 2 - pin



- UNC mounting kit includes: Metric mounting kit includes:
- 6 - 3/4"-10 x 4.50" SHCS
 - 4 - 220 O-ring viton
 - 2 - 210 O-ring viton
 - 2 - pin

PART NUMBER SYSTEM



Non Standard Valve Adapters ... Consult Factory

Obsolete - Typical

01Q to D03
 DG4M4 to D03
 D1D04 to D03
 D1D04 to D05
 D06 to D05
 D07 to R08
 D1D12 to D07
 D1D12 to D05
 D1L/WE5 to D03
 P37 (Double A) to D10

Rotators

D03 90° 2001F03-02821
 D03 180° 2003F03-03719
 D03 270° 2003F03-03723
 D05 90° 2006F03-05088
 D05 180° ZTB VA_05G05GBAUTSB

Spacers

Typical part number
 VA03G03GABUS###
 (where ### = height)
 VA05G05GABUS###
 VA10G10GABUS###

Specials

D08J (oversize) to D08
 D10J (oversize) to D08J (oversize)

Servo/Servo

ISO 10372 & proprietary
 04S to 02S VA_04S02SABU
 04S to 06S VA_04S06SABU
 04S to 57S VA_04S57SABU
 04S to S71 VA_04SS71ABU
 57S to 04S VA_57S04SABU
 06S to 057 VA_06S057ABU

Servo/Directional

ISO 10372 & ISO 4401
 02S to S03 VA_02S03SABU
 04S to D03 VA_04S03GABU
 04S to D05 VA_04S05GABU
 06S to D05 VA_06S05GABU
 S61 to D05 VA_S6105GABU
 S71 to D03 VA_S7103GABU

Directional/Servo

ISO 4401 & ISO 10372
 D03 to S04 VA_03G04SABU
 D05 to 04S VA_05G04SABU
 D08 to S04 VA_08G04SABU
 D08 to Moog641 VA_08G05GABU

For more information, please consult factory

WE RESERVE THE RIGHT TO DISCONTINUE MODELS, OR CHANGE SPECIFICATIONS WITHOUT NOTICE OR INCURRING OBLIGATION